

# Massachusetts Bay Sailing Association



Yearbook **2025**



# Contents

## Organization

Our Mission	2
Our Officers and Board Members Member	2
Organizations and Representatives U.S.	3
Sailing Resources	4
Mark List	5

## 2025 Competitions and Awards

Season Championship	7
Pursuit Race Championship	8
Shorthanded Championship	9
Yacht Club of the Year	10
Competitor of the Year	10
Rookie of the Year	10
2025 Racing Calendar	11
Regatta Pages	12
General Sailing Instructions	53



# Our Mission

Under various names and forms the Massachusetts Bay Sailing Association (MBSA) has been serving the sport of sailing since the 1950's. Today, the Association is a volunteer led, 501(c)3 charitable organization dedicated to the promotion and coordination of the amateur sport of sailing in the Massachusetts Bay area.

## Our Core Duties

We provide coordination between our member organizations via delegates to ensure that those sailors wishing to compete in handicap sailing races throughout the summer have the greatest opportunity to do so.

We promote our member organization events to our members and competitors of the association as well as the general public.

We award the most competitive racers in the area who are current members of MBSA.

# Our Board

<b>President</b>	Logan Greenlee
<b>Vice President</b>	Bill Finn
<b>Secretary</b>	Dan Himes
<b>Treasurer</b>	Greg Erman
<b>Scoring</b>	Lance Ryley
<b>Awards</b>	Julee Colella
<b>Digital/Communications</b>	Jake DiMare
<b>Events/Growth</b>	Chris Lubeck
<b>PHRF/Shorthand</b>	Robert Bova
<b>EZ Rule/Shorthand</b>	Lance Ryley
<b>Member At Large:</b>	Mitch Wiest

# Member Organizations and Delegates

Our member organization delegates are responsible for representing their club during over the course of the sailing season. Each member organization is permitted one delegate for voting purposes. If there is a need to contact a delegate please send and e-mail to [delegates@massbaysailing.org](mailto:delegates@massbaysailing.org).

**Annisquam Yacht Club**

Zak Beekman

**Boston Yacht Club**

Mike Michaud

**Constitution Yacht Club**

Ryan Wagner

**Corinthian Yacht Club**

Dan Boyd

**Cottage Park Yacht Club**

Sue Hardy

**Courageous Sailing Center**

Dave DiLorenzo

**Dolphin Yacht Club**

Peter Jackson

**Eastern Yacht Club**

Jack Cochrane

**Eastern Point Yacht Club**

Ben Richardson

**Hingham Bay Racing**

Geoffrey Roth

**Hingham Yacht Club**

Dave Nelson

**Hull Yacht Club**

Geoffrey Roth

**J105 Fleet #2**

Ken Bowden

**Jubilee Yacht Club**

Tyler Jupp

**Manchester Yacht Club**

Tony Leggett

**Marblehead Yacht Club**

Eliot Shanabrook

**Nahant Dory Club**

Jody Graul

**Palmer's Cove Yacht Club**

Robert Bova

**PHRFNE**

Robert Bova

**Provincetown Yacht Club**

Doug Sandilands

**Sandy Bay Yacht Club**

Beth Leahy

**Satuit Boat Club****Scituate Sailing**

James (Jamie) Plassman

**Savin Hill Yacht Club**

Steve Kavanagh

**Scituate Harbor Yacht Club**

Gregg Morse

**Storm Trysail Club**

Clarke Smith

**Boston Sailing Center**

David Bryan

**Marblehead Racing Association**

Dan Himes



# U.S. Sailing Resources

## **The Racing Rules of Sailing**

Races run by our member organizations are organized under the U.S. Sailing Racing Rules of sailing. The latest revision of the Racing Rules of Sailing can be found on the U.S. Sailing Website

[U.S. Sailing Racing Rules of Sailing 2025-2028](#)



## **Race Officials**

In addition to the racing rules of sailing, U.S. Sailing has a number of race officials in the region. If you are in need of help for managing regattas, hearing protests or need assistance with regard to racing official's roles and contact information can be found with the locator below.



[Find a U.S. Sailing Race Official](#)

## **Safety Equipment Requirements**

Safety Equipment Requirements established and maintained by World Sailing and U.S. Sailing. These rules are also a good guide for the type of equipment and level of preparation a skipper might consider for their vessel.

[Review Safety Equipment Requirements](#)



# Standard Marks

## List A: MASSACHUSETTS BAY

LETTER OR NO.	DESIGNATION	GOV'T SYMBOL	LIGHT CHARACT	LAT	LONG	GOV#
A	EASTERN POINT WHISTLE	R "2"	Fl R 4s	42.34.2406	70.39.8349	340
B	NEWCOMB LEDGE WHISTLE	G "1"	Fl G 4s	42.30.4639	70.44.3875	365
D	TINKERS ROCK GONG	GR "TR"		42.28.9123	70.48.8663	10410
E	PORTABLE GYBE/REACH MARK					
F	PORTABLE START/FINISH MARK					
G	GREAT PIG ROCKS BUOY	R "4"	Fl R 4s	42.27.6261	70.50.2093	365
H	FLIP ROCK GONG	RG "FR"		42.24.1423	70.55.4541	10555
J	BOSTON APPROACH BUOY	RW "BG"	Mo (A) W	42.23.4470	70.51.4843	385
K	BOSTON LIGHTED WHISTLE	RW "B"	Mo (A) W	42.22.7026	70.46.9693	410
L	BOSTON APPROACH BUOY	Y "BF"	Fl (4)Y 20s	42.20.7336	70.39.0653	420
M	BOSTON ENTRANCE WHISTLE	RW "NC"	Mo (A) W	42.22.5347	70.54.2972	10680
N	THE GRAVES LIGHTED WHISTLE	G "5"	Fl G 4s	42.22.5470	70.51.4741	380
P	BOSTON SOUTH ENTRANCE CAN	GC "1"		42.21.8767	70.53.8300	10740
Q	3½ FATHOM LEDGE BELL	R "2"	Fl R 4s	42.21.0829	70.50.4964	395
R	BOSTON LEDGE NUN	RN "6"		42.20.0774	70.51.8282	405
S	THIEVES LEDGE WHISTLE	G "1"	Q G	42.19.5678	70.49.8222	430
U	HARDING LEDGE BELL	G "1HL"	Fl G 4s	42.18.5698	70.50.6312	435
V	21 FOOT LIGHTED BUOY (near MINOTS)	G "21"	Fl G 4s	42.16.5794	70.42.3676	450
W	PORTABLE WINDWARD MARK					
X	DAVIS LEDGE GONG	G "1DL"	Fl G 2.5s	42.16.3482	70.44.8547	445
Y	SCITUATE APPROACH GONG	RW "SA"	Mo (A) W	42.12.1257	70.41.8224	460
Z	FARNHAM ROCK BELL	R "6"	Fl R 4s	42.05.5975	70.36.4348	12490

## LIST B: SALEM BAY

LETTER OR NO.	DESIGNATION	GOV'T SYMBOL	LIGHT CHARACT	LAT	LONG	GOV#
1	SALEM CHANNEL BUOY (CURTIS POINT)	G "13"	Fl G 4s	42.32.5781	70.50.3534	10035
2	MARBLEHEAD CHANNEL (CHAPPEL LG)	G "3"	Fl G 4s	42.31.1306	70.49.4698	10465
3	MARBLEHEAD CHANNEL BELL (15-FT RK)	RG "FR"	Fl (2+1) R 6s	42.30.2426	70.49.0773	10425
4	SALEM CHANNEL BUOY (BOWDITCH LG)	G "11"	Fl G 4s	42.32.5483	70.48.5550	10020
5	EAGLE I, CHANNEL CAN (POPE HEAD)	GC "5"		42.31.6868	70.47.9648	10375
6	CHILDREN'S I, CHAN. NUN (NR HALF RK)	RN "4"		42.30.4861	70.46.8391	10390
7	SALEM CHANNEL BELL (POWERS LG)	G "9"	Q G	42.32.3927	70.47.2894	9995
8	SALEM CHANNEL NUN (GALES LG)	RN "6"		42.32.8277	70.45.8909	9980
9	SALEM CHANNEL CAN	GC "5"		42.31.7667	70.45.7181	9970
0	SALEM CHANNEL CAN	GC "3"		42.31.1476	70.45.0729	9965

**PASSING OR BOUNDARY MARKS (RESTRICTED AREAS):** Boats shall not traverse the area bounded by a line connecting the following in the sequence listed: Bell G "9" (Powers Rock), Salem Channel Cans: "7" & "3", Nun "2" (near Newcomb Ledge), South Gooseberry Island, Can "5" (Pope Head), Bell G "9" (Powers Rock). ***Yachts entering this area must leave between the same two boundary markers that they passed when entering.*** Yachts shall not pass to the west of Great Pig Rocks Buoy R "4" (Outer Breakers) or to the north of Shag Rocks R "2" (Nahant). ***If any of the marks listed in this paragraph are used as marks of the course, passing them on their required side is allowed.***

**ATTENTION:** MBSA provides this list for letter designation only. The details given are NOT FOR NAVIGATION.  
Please reference official US Coast Guard publications for accuracy.

## List C: GREATER BOSTON/HINGHAM HARBOR

LETTER OR NO.	DESIGNATION	GOV'T SYMBOL	LIGHT CHARACT	APPROX LAT N	APPROX LONG W	GOV#
1	Boston North Channel Bell (Finns Ledge)	R "2"	Q R	42.22.1772	70.55.1562	10685
2	Boston North Channel Buoy	G "5"	FI G 2.5s	42.21.4433	70.55.5417	10700
3	President Roads Junction	GR "PR"	FI (2+1)G6s	42.20.4892	70.56.2264	10735
4	President Roads Anchorage Gong	Y "A"		42.20.5916	70.57.5617	10815
5	President Roads Anchorage Buoy	N "E"		42.20.2129	70.58.7788	10860
6	Winthrop Harbor Approach Buoy	RN "4"		42.21.0182	70.58.7033	11045
7	Boston Main Channel Buoy (Castle Island)	R "10"	FI R 6s	42.20.7183	71.00.7250	10910
8	Boston Main Channel Buoy	R "6"	FI R 2.5s	42.20.2014	70.59.9004	10895
9	Long Island Head Buoy (President Roads)	G "17"	FI G 2.5s	42.19.9556	70.57.5239	10805
10	Sculpin Ledge Buoy (Sculpin Ledge Channel)	RN "8A"		42.18.9059	70.58.8529	11575
11	Dorchester Bay Buoy (NW Thompson Is.)	RN "4"		42.19.2942	71.00.8003	11205
12	Western Way Buoy (West Head)	RN "6"		42.18.3933	70.58.5545	11564
13	Nantasket Roads Chan Bell (Pt. Allerton)	G "3"	FI G 4s	42.19.1188	70.52.7833	11355
14	Kelly Rock Bell (The Narrows)	R "2"		42.19.2359	70.54.7023	11415
15	Nantasket Roads Channel Buoy (N Hull Gut)	G "11"	FI G 2.5s	42.18.6729	70.55.2658	11395
16	Rainsford Island Shoal Danger Buoy	W Or		42.18.6273	70.56.7219	11507
17	Weymouth Fore River Channel Buoy	G "5"	FI G 4s	42.17.6326	70.55.4043	11660
18	Bumkin Island (Shoal) Buoy	G "1"	FI G 4s	42.17.4176	70.54.8591	11945
19	Crow Point Flats Buoy (Bumkin Is.)	RG N "CF"		42.16.9250	70.54.6000	11970
20	unused					
21	Houghs Neck Channel Buoy	GC "1"		42.16.5198	70.56.6318	11620
22	Weymouth Fore River Channel Light	"13"	Q G	42.16.2706	70.55.7833	11710
23	Western Way Buoy WW	RG "WW"	FI (2+1)R6s	42.16.6469	70.55.9303	11695
24	Weymouth Fore River Channel Buoy	G "9"	FI G 2.5s	42.17.0511	70.55.7873	11685
25	Western Way Buoy (Peddocks Island)	R "2"	FI R 2.5s	42.17.0048	70.56.9947	11537
26	Western Way Buoy (Peddocks Island)	G "3"	FI G 2.5s	42.17.2000	70.57.4667	11539
27	Nahant Rock	GC "1"		42.24.3667	70.56.7750	10560
28	Shag Rocks Lighted Buoy	R "2"	FI R 4s	42.24.7208	70.54.3592	10540
29	Weymouth Fore River Channel Buoy	G "17"	FI G 6s	42.15.7363	70.56.2373	11725
30	unused					
31	Nubble Channel Buoy	GC "1"		42.19.5234	70.56.8420	11485
32	Hospital Shoal Buoy	GR C "HS"		42.18.7333	70.56.2500	11504
33	Nixes Mate Bell (President Roads)	G "15"	Q G	42.20.0421	70.56.6750	10790
34	HB Racing (West of Outer Seal Rock)	Orange Barrel "34"		42.17.8	70.54.8	
35	HB Racing (Middle of Hull Bay)	Orange Barrel "35"		42.17.5	70.53.8	
36	unused					
37	Hingham Harbor Approach Buoy	RN "6"		42.16.4388	70.53.9318	11990
38	unused					
39	unused					
HB	Hingham Bay Starting Buoy (N of Sheep I.)	Wht"HSB"		42.17.3	70.55.4	

**ADDITIONAL RESTRICTIONS:** Boats shall not complete passage in either direction between Castle Is. and Horn/Light "5", Deer Is. and Deer Is. Light Buoy, Deer Is. and Great Faun Day Beacon R "6A", Nixes Mate and Gallops Is., Boston Light and Little Calf Is., Toddy Rocks Can "9A" and Hull Shore, Rainsford Is. and Quarantine Rocks, Harry's Rock Day Beacon R "HR" and Peddocks Is., Grape Is. and Slate Is., Slate Is. and Hingham Shore, G "3" and Bumkin Is., Bumkin Is. and Sunset Pt.. ***There are no exceptions to the restricted areas listed in this paragraph.***

**ATTENTION:** MBSA provides this list for letter designation only. The details given are NOT FOR NAVIGATION.  
Please reference official US Coast Guard publications for accuracy.



# Our Awards

## Season Championship

The MBSA Season Championship is the MBSA premier fleet racing trophy. Consisting of windward/leeward and navigator style races this championship is awarded to boats that participate in at least three races that are in the “Q” series as indicated on the calendar.

Awards are given to the top three finishers in A,B,C,D,F and G fleet.

### Qualification

A boat shall race in a minimum of three races for each championship to qualify for the season trophy. A boat may race in as many events as she wishes however only the best four scores will be used to calculate season standing.

### Qualifying Regattas

#### North Shore Qualifiers

Somerset Regatta - CYC  
BYC Wednesday Night Series 1-3  
JYC Jubilee Night Series 1-3  
155th Annual Regatta - EYC  
Beringer Bowl - BYC  
Ted Hood Regatta - Storm Trysail / EYC  
Jubilee Regatta - JYC  
Fall Series - MYC  
Marblehead Chowder Cup - CYC

#### South Shore Qualifiers

Boston Harbor Rumble Series 1-3  
Circle Lights Regatta - HBR  
Solstice Regatta - HBR  
Robert Hartl Memorial Spring Regatta - Con YC  
Constitution Cup - BHHR/CPYC  
Hitchcock Regatta - Hingham YC  
JFK Regatta - CPYC  
Chowder Cup - HBR



# Our Awards

## Pursuit Championship

The MBSA Pursuit Championship is the MBSA premier pursuit racing trophy. This championship is awarded to boats that participate in at least three races that are in the “P” series as shown on the calendar.

Awards are given to the top three finishers in each of the Pursuit classes: Spinnaker and Non-Spinnaker.

### Qualification

A boat shall race in a minimum of three races for each championship to qualify for the season trophy. A boat may race in as many events as she wishes however only the best four scores will be used to calculate season standing.

### Season Pursuit Championship Qualifiers

#### North Shore

Fast Mermaid Pursuit Race - EYC  
S.S. Crocker Memorial Race - MYC  
Round the Salvages Pursuit Race - EPYC  
Phil Small Race - JYC  
Clemson Chase Race - MHDYC  
Bobby Veltman Memorial Race - EPYC  
Sail Salem Pursuit Race - BYC  
Pot Luck Pursuit Race - EYC

#### South Shore

Scituate Invitational  
Make-A-Wish Regatta - CPYC  
Flip Flop Regatta - Courageous Sailing  
Great Chase Race - Hull YC  
Boston Light Race - Savin Hill/ConYC



# Our Awards

## Short Handed Championship

The MBSA Short Handed Championship is the MBSA premier shorthanded racing trophy. This championship is awarded to competitors and their boat that participate in at least 4 races that are in the “SH” series as shown on the calendar. It is the intention that these races will be scored using the Spinnaker Rating for each entry.

### Qualification

A boat shall race in a minimum of three races for each championship to qualify for the season trophy. A boat may race in as many events as she wishes however only the four best scores will be used to calculate season standing.

### Short Handed Championship Qualifiers

#### North Shore

Lambert Ocean Race - EYC (overnight)  
Beringer Bowl - BYC  
Downeast Challenge - MHDYC  
Mass Bay Shorthanded Regatta - PCYC  
Bandit Regatta - CYC

#### South Shore

Circle the Lights  
Solstice Regatta  
Constitution Distance Race (COD-R)  
Chowder Cup





# Our Awards

## **Yacht Club Of The Year**

The MBSA Yacht Club of the Year is awarded to the club nominated by the membership and selected by the Board of Directors for their contributions to the sport of sailing over the course of the sailing season.

## **Competitor of the Year**

The MBSA Competitor of the year is awarded to the competitor nominated by the membership and selected by the Board of Directors for their contributions to the sport of sailing over the course of the sailing season.

## **Rookie of the Year**

The MBSA Rookie of the Year is awarded to the newest sailor in Mass Bay who is nominated by the membership and selected by the Board of Directors.

## **Women Sailor of the Year**

The MBSA Women Sailor of the Year is awarded to a female sailor nominated by the MBSA membership for her accomplishments and contributions to the sport of sailing.

---

# ***MBSA Joins The Race to Restore Our Oceans***

## ***Let's All Do Our Part***

---

### **BEST PRACTICES CHECKLIST**

---

#### **ELIMINATION OF SINGLE-USE ITEMS**

- ☐ 1. Eliminate Single-Use Water Bottles and Provide Water Refill Stations
- ☐ 2. Eliminate Plastic Straws
- ☐ 3. Serve Food with Plastic-Free Dinnerware
- ☐ 4. Skip Bags or Go Reusable
- ☐ 5. Award Practical Items or Use a Perpetual or Upcycled Trophy

---

#### **COMMUNITY INVOLVEMENT**

- ☐ 6. Publicize Your Sustainability Efforts
- ☐ 7. Involve Local Organizations
- ☐ 8. Post Educational and Reusable Signage
- ☐ 9. Serve Local Food or Source Seafood Sustainably

---

#### **RESPONSIBLE WASTE MANAGEMENT**

- ☐ 10. Organize a Green Team
- ☐ 11. Ensure Proper Waste Bin Placement and Signage
- ☐ 12. Divert Food Waste from the Landfill
- ☐ 13. Use Paperless Event Management

---

#### **ENVIRONMENTAL STEWARDSHIP**

- ☐ 14. Host a Beach or Marina Clean-up
- ☐ 15. Prevent Toxins from Entering the Water
- ☐ 16. Increase Awareness of Wildlife and Habitat Protection
- ☐ 17. Offer Vegetarian or Vegan Alternatives

---

#### **CLIMATE AWARENESS**

- ☐ 18. Promote Alternative Transportation
- ☐ 19. Reduce Day-of Event Emissions
- ☐ 20. Inspire Future Action



# 2025 Offshore Racing Schedule

MASS BAY SAILING ASSOCIATION

Day	Date	HC	North Shore	Series	HC	South Shore	Series	Other
Sat	5/24	PH	Memorial Day Regatta - BYC					
Sun	5/25							
Mon	5/26	PH	Tour the Bay Pursuit Race - EYC					
Wed	5/28				EZ	Wednesday Evening Races #1/2 - CPYC		
Wed	6/4				EZ	Boston Harbor Rumble Series #1/3	Q (series)	
Sat	6/7							
Sun	6/8	PH	Somerset Regatta - CYC	Q	EZ	Circle Lights Regatta - HBR	Q, H, SH	
Wed	6/11	PH	BYC Wednesday Night Series #1/3	Q (series)				
Thurs	6/12	PH	JYC Jubilee Night Series #1/3	Q (series)				
Sat	6/14				EZ	SHYC 150th Anniversary/Hosea White Regatta		
Sun	6/15							
Wed	6/18				EZ	Boston Harbor Rumble Series #2/3	Q (series)	
Fri	6/20	PH	Summer Pursuit Race #1 - EYC		EZ	Solstice Regatta - HBR	Q, H, SH	Marion to Bermuda Start
Sat	6/21				EZ	Robert Hartl Memorial Spring Regatta - Con YC	Q	
Sun	6/22	EZ	Patton Bowl Regatta - MYC					
Fri	6/27	EZ	Lambert Ocean Race - EYC (overnight)	O, SH				
Sat	6/28							
Sun	6/29	PH	Fast Mermaid Pursuit Race - EYC	P				
Sun	6/29							
Wed	7/2	PH	Care Dimensions Hospice Charity Pursuit Race					
Fri	7/4	PH/EZ	155th Annual Regatta - EYC	Q				
Sat	7/5				PH	Scituate Invitational	P	
Sun	7/6							Marblehead to Halifax Start
Thurs	7/10	PH	JYC Jubilee Night Series #2/3	Q (series)				
Fri	7/11		JYC Shorthanded Regatta					
Sat	7/12	PH	S.S. Crocker Memorial Race - MYC	P	EZ	Constitution Cup - BHHR/CPYC	Q	
Sun	7/13	PH	Midsummer Ocean Race - CYC			Boston Harbor Ladies Regatta - SHYC		
Wed	7/16	PH	BYC Wednesday Night Series #2/3	Q (series)	EZ	Boston Harbor Rumble Series #3/3	Q (series)	
Fri	7/18	PH	Beringer Bowl - BYC	Q,SH				
Sat	7/19							
Sun	7/20							
Fri	7/25	EZ	Downeast Challenge - MHDYC	O,SH				Marblehead Race Week / Helly Hansen Sailing World Regatta Series 7/24 - 7/27 - BYC
Sat	7/26	PH	Round the Salvages Pursuit Race - EPYC	P				
Sun	7/27							
Wed	7/30				EZ	Wednesday Evening Races #2/2 - CPYC		
Fri	8/1	PH	Summer Pursuit Race #2 - EYC					
Sat	8/2	PH	Phil Small Race - JYC	P	EZ	Make-A-Wish Regatta - CPYC	P	Make-A-Wish Youth and OD - CPYC
Sun	8/3	PH	Mass Bay Shorthanded Regatta - PCYC	SH				
Fri	8/8							
Sat	8/9		Cape Ann Challenge - AYC/EPYC (8/9)					
Sat	8/9				EZ	Flip Flop Regatta - Courageous Sailing	P	
Sun	8/10	CRF	Corinthian Classic Yacht Regatta - CYC		EZ	Hitchcock Regatta - Hingham YC	Q,H	
Wed	8/13	PH	BYC Wednesday Night Series #3/3	Q (series)				
Thurs	8/14	PH	JYC Jubilee Night Series #3/3	Q (series)				
Fri	8/15	PH	Ted Hood Pursuit Race - Storm Trysail / EYC					
Fri	8/15	EZ	Pursuit to The Ted Hood - Storm Trysail / EYC					
Sat	8/16							
Sun	8/17	EZ/PH	Ted Hood Regatta - Storm Trysail / EYC	Q				
Sat	8/23							
Sun	8/24	EZ	Clemson Chase Race - MHDYC	P	EZ	JFK Regatta - CPYC	Q	Rhodes 19 Nationals (21-24)
Fri	8/29	PH	Summer Pursuit Race #3 - EYC			Constitution Overnight Distance Race (COD-R)		
Sat	8/30	PH	Bobby Veltman Memorial Race - EPYC	P	EZ	Constitution YC	O,SH	
Sun	8/31							
Mon	9/1	PH	Sail Salem Pursuit Race - BYC	P				
Sat	9/6	PH	Jubilee Regatta - JYC	Q				
Sun	9/7	PH	James R. Hodder Regatta - BYC					
Sat	9/13							
Sun	9/14				EZ	Great Chase Race - Hull YC	P	
Sun	9/14	EZ	Fall Series - MYC	Q				
Sat	9/20	PH	Pot Luck Pursuit Race - EYC	P	EZ	Chowder Cup - HBR	Q, H, SH	
Sun	9/21							
Sat	9/27				EZ	Boston Light Race - Savin Hill/ConYC	P	
Sun	9/28	PH	Marblehead Chowder Cup - CYC	Q				
Sat	10/4	EZ	Bandit Regatta - CYC	SH				
Sat	10/4	PH	Pumpkin Pursuit Series #1 - EYC					
Sat	10/11	PH	Pumpkin Pursuit Series #2 - EYC					
Sat	10/18	PH	Pumpkin Pursuit Series #3 - EYC					
Mass Bay Sailing Awards Dinner - Cottage Park Yacht Club								
Thurs	1/1/26	EZ	Jack Roberts Memorial New Year's Day Race - Constitution YC - Inner Boston Harbor					
Q = MBSA Qualifier P = MBSA Pursuit H = Hingham Bay O = Ocean SH = Short Handed (additional fleet) * = Date subject to change								

VER 2025.2





Boston Yacht Club  
Marblehead MA

**RUMSON'S**  
LIFE LIVED, LIFE ENJOYED.®

## Memorial Day Weekend Regatta

Dates:

May 24<sup>th</sup>, 12:30

**Kickoff your summer on Saturday May 24<sup>th</sup> with this classic PHRF event**, first run in 1966. All PHRF classes, including a Doublehanded division, are racing.

For more information or to register click on the link:

<https://www.bostonyc.org/racing>

Photo By Bruce Durkee



© BRUCE DURKEE 2022



**TOUR the BAY**  
**PURSUIT RACE**  
**EASTERN YACHT CLUB**  
**Marblehead, Massachusetts USA**  
**Monday – May 26, 2025**



**Join us for an early-season race to get your crew tuned up for the season. Starting at Marblehead harbor, you'll head past Children's Island to GM N°4" near Halfway Rock, then NW past the Gooseberry's, and up Eagle Island Channel to Powers Rock. The next leg goes just south of Misery Island to GM "N14" in Salem Sound. Finally, pass the restricted area at Coney Ledge (C5) and finish near the start.**

**1. RULES**

- 1.1 Racing will be governed by The Racing Rules of Sailing & MBSA GSI except as changed by these ESI.
- 1.2 A boat may take a One-Turn Penalty when she may have broken one or more rules (Changes RRS 44).
- 1.3 Contact between boats is grounds for disqualification of both boats (Changes RRS 14).

**2. REGISTRATION & FEES**

- 2.1 Open to all PHRF, one design, and cruising boats. If you do not have a 'PHRF rating certificate' the Race Committee (RC) will assign a rating. Register at [www.regattaman.com/calendar.php?reg=MBSA/MBSA-N](http://www.regattaman.com/calendar.php?reg=MBSA/MBSA-N). The entry fee is \$40 - a \$5 discount for US Sailing members and a \$5 discount for MBSA. An 'early entry' discount is \$5 on or before May 12th. The RC may adjust handicaps to facilitate competition.
- 2.2 Online Registration shall be done no later than 2100 hours the day before the race. Late entries may be accepted at the discretion of the Race Committee. The Regattaman website shows a scratch sheet and the start time at 'Entries'.
- 2.3 At registration select the Division, either Cruising (JAM) or Racing (Spinnaker) you want to be scored in.

**3. SCHEDULE OF RACES**

Only one race will be held. The first start will be approximately 1330 hours local time.

**4. THE COURSES**

- 4.1 The course will be provided in an Addendum to the Sailing Instructions. Copies will be available at the EYC Sailing Center and on the Regattaman website at [www.regattaman.com](http://www.regattaman.com).
- 4.2 The starting area shall be between the mouth of Marblehead Harbor and Children's Island.
- 4.3 Shortening of a race shall be between a blue flag on a race committee boat and the nearest mark of the course. The RC boat will also display an 'S' flag.

**5. MARKS**

Marks shall be government navigation buoys or orange tetrahedrons or MarkBot.

**6. THE START**

- 6.1 The starting line shall be between a staff on ETO bearing an orange flag and a green tetrahedron or a MarkBot or government mark. The mark may be replaced by another RC boat bearing an orange flag.
- 6.2 A code flag 'W' will be raised with one sound signal at the beginning of the start time sequence.
- 6.3 Each boat will start according to her rating with slower boats going first. Starting time information will be available at the EYC Sailing Center, or the website [www.regattaman.com](http://www.regattaman.com).
- 6.4 The RC will attempt to do a countdown (at 1 min. and 10 sec.) for each boat's start - broadcast on VHF 72
- 6.5 OSC boats shall restart by rounding either end of the starting line – no dip restarts allowed.

**7. THE FINISH**

The finish line shall be between a staff on an RC boat bearing a blue flag and a green tetrahedron or a MarkBot.  
The mark may be replaced by another RC boat bearing a blue flag.

**8. TIME LIMITS**

The time limit for the race is 4 hours from the first start.

**9. SCORING**

Boats shall be scored based on their finishing position.

**10. PROTESTS AND REQUESTS FOR REDRESS**

Since this is informal racing, competitors are urged to avoid possible protest situations. If this is not possible, you are encouraged to take a One-Turn Penalty as per 1.2.

**11. SAFETY**

A boat retiring from racing or in distress shall notify the RC on VHF channel 72 at the earliest opportunity.

**12. POST-RACE**

All competitors are invited to socialize and celebrate the day's racing at the EYC Sailing Center post-race with chowder, hot dogs, and a chit/credit card bar.

**COTTAGE PARK YACHT CLUB  
BOSTON HARBOR HANDICAP RACING  
WED EVENING RACES 2025**



**Series 1: May 28, June 4\*, 11, 18\*, 25, July 2, 9, 16\*, 23.**

**Series 2: July 30, Aug 6, 13, 20, 27, Sept 3, 10.**

**Asterisks denote Rumbles**

*For more information, complete NOR and Sailing Instructions go to [www.regattaman.com](http://www.regattaman.com)*

**RULES:** This *Event* will be governed by US Sailing 2025-2028 RRS as modified by the MBSA General Sailing Instructions except as changed by the Event Sailing Instructions. **Yachts are required to check-in by passing the stern of the signal boat prior to the start.**

**ELIGIBILITY:** The series is open to all boats with a valid 2025 ORR-ez Handicap. To encourage participation, a rating will be assigned to boats who have not previously obtained an ORR-ez certificate. CPYC one design classes may participate with their own start.

**REGISTRATION and ENTRY:** Register at Regatta Management Solutions [www.regattaman.com](http://www.regattaman.com) \$135 for season pass for both series. (MBSA Membership Discount \$5.00). Individual Series fee \$75 (MBSA Membership Discount \$5.00.) Payable online at [www.regattaman.com](http://www.regattaman.com). The 3 Boston Harbor Rumbles are included in the entry fee.

**HANDICAP SYSTEM:** HANDICAP SYSTEM: ORR-EZ Certificate. Time on Time will be used. The course and wind speed range will be determined and announced at race time.

**NOTICES TO COMPETITORS:** Will be posted on [www.regattaman.com](http://www.regattaman.com) and/or by radio VHF Channel 72.

**SCHEDULE OF RACES** One stand-alone race per evening.

**WARNING SIGNAL:** The first warning signal will be made at 1830 hrs. for handicap boats and 1815 for CPYC one design boats until August 28, when the first warning signal will be at 1800 hrs. for handicap boats and 1745 hrs. for one design boats. An automatic sound system will be used with 5-minute signals. The class starts will be announced by radio and will be accompanied by hoisting the appropriate code flag.

**NOTICE OF RACE and SAILING INSTRUCTIONS:** Are posted on [www.regattaman.com](http://www.regattaman.com)

**RACING AREA:** Start in the vicinity of Yellow Nun "E", 1+ miles west of Deer Island Light.

**COURSE:** Courses using marks from Cottage Park Yacht Club Wednesday Night Racing Mark List will be designated by letters displayed by the race committee signal boat.

**MARKS:** Cottage Park Yacht Club Wednesday Night Racing Mark List **REVISED 2023**. The Race Committee boat may also have copies available and posted on [www.regattaman.com](http://www.regattaman.com) and the CPYC website, [www.cpyc.org](http://www.cpyc.org)

**TIME LIMIT:** The time limit for each class shall be two hours. The Finishing Window will be 30 minutes after the first boat finishes in each class.

**PROTESTS:** Written protests must be filed on the appropriate form and may be submitted by email within 24 hours to the Fleet at [www.windjammer@cpyc.org](mailto:www.windjammer@cpyc.org) Details of the hearing will then be provided as soon as possible. A boat may take a one-turn Penalty when she may have broken one or more rules.

**SCORING:** The low point system will be used in accordance with Appendix A4 of The Racing Rules of Sailing (2025 -2028). Each night will be scored as a separate entity. Rumble finishes are not included in Series I, or Overall Series Scoring. If Six (6) or more races are sailed, a boat's worst race will be discarded.

**PRIZES:** Prizes will be awarded at MBSA/CPYC awards night for first place in each class for Series 1 and Series 2. Prizes will be awarded for three places in each class for the overall Series. Overall series prizes will be based on the summing of the total Series final scores with tie breakers based on most 1st place finishes, and if the tie still exists, most second place finishes, etc.



**All sailors are invited to the CPYC Pilot House following the evening racing.**  
**Contact RC at [www.windjammer@cpyc.org](mailto:www.windjammer@cpyc.org) or Launch driver VHF 78 to arrange for free dockage or mooring**





## **Rumble I** **June 4**

Rendezvous: Spectacle Island  
Start: 1830 hours



## **Rumble II** **June 18**

Rendezvous: Hospital Shoals  
Start: 1830 hours



## **Rumble III** **July 16**

Rendezvous: Yellow Nun 'E'  
Start: 1830 hours



## **The GBRS is a qualifying event for the MBSA Championship. Register Today!**

All yachts are required to register online for each of the Rumble events  
at [www.regattaman.com](http://www.regattaman.com)

MBSA members with a valid 2025 EZ certificate are eligible.

Starts will be in accordance with RRS 26 and in 'reverse' order  
(the slowest class will start first and fastest will start last).

RC will be using rolling starts – The warning signal for each succeeding class  
shall be the starting signal for the subsequent class.

Classes will be assigned based on the 2024 MBSA "Spin" Class Splits.

The results of the 3 races will be combined for a single result for the purposes of the Q scoring.



CORINTHIAN  
YACHT CLUB

# Somerset Regatta

MBSA QUALIFIER ♦ SUNDAY, JUNE 8 2025

[regattaman.com/calendar](http://regattaman.com/calendar)



## VITAL INFO

**Mass Bay Qualifier**  
PHRF ToD Spin and JaM

### Start time

First gun at 2:00 PM

### Starting Line

In the vicinity of Tinker's Rock  
Gong, MBSA List A Mark D

### Registration

\$75 Entry Fee  
\$5 off for MBSA and/or US Sailing members  
\$10 more off before June 4

**Moorings for two nights included!**  
**Enjoy the full hospitality of the Club!**

For moorings (while they last) contact  
dockmaster Jack Carney

[jcarney@corinthianyc.org](mailto:jcarney@corinthianyc.org)  
781-631-4745  
VHF 9

**REGISTER TODAY!**



## JOIN US FOR SOCIAL ACTIVITIES AFTER THE RACE!

**Come up Saturday and stay the night! Enjoy the hospitality of the club and the best view on the North Shore.**

- First place trophies will be awarded in each class with 3 or more entries.
- Second place trophies will be awarded in each class with at least 6 competitors.
- Additional trophies will be awarded for each 6 *additional* competitors in a class.
- The Walter E. Knight Interstate Challenge Cup will be awarded for best overall performance
- A trophy will be awarded for best performance by a CYC boat.
- Boats traveling to Marblehead contact Dockmaster Jack Carney for moorings (contact information in VITAL INFO block).





# CIRCLE THE LIGHTS RACE

## SUNDAY / JUNE 8, 2025

JOIN US FOR A 22 NAUTICAL MILE DISTANCE RACE AROUND THE BOSTON, GRAVES AND MINOT LIGHTHOUSES

A MBSA and Hingham Bay Qualifier

## Schedule of Races

- One race is scheduled for each class.

## Start Time

- The first warning signal will be made at 1200 hrs.

## Courses

Course assignments made by class, on the water, by RC.

- **Course 1 (22nm)**  
**Start:** at Mark "32" (Hospital Shoals Bouy GRC "HS") leaving Georges Island to Starboard and keeping Boston Light within the course,  
**Mark "N"** (Graves Lighted Whistle G"5") to Starboard,  
**Mark "X"** (Davis Ledge Gong G"IDL") to Starboard,  
**Finish:** between Mark "32" and Green Can "1".
- **Course 2 (14nm)**  
**Start:** at Mark "32" (Hospital Shoals Bouy GRC "HS") leaving Georges Island to Starboard and keeping Boston Light within the course,  
**Mark "N"** (Graves Lighted Whistle G"5") to Starboard,  
**Mark "U"** (Harding Ledge Bell G"1HL") to Starboard  
**Finish:** between Mark "32" and Green Can "1".

>> RC reserves the option to shorten either course to finish between Boston Light & R "4" Fl R 4s. This shorten course option would be declared by the RC at the start.

You will document your finish time (GPS time; hrs:min:sec format) and any visible boats front/behind you. Finish times are to be emailed to: [RC@hinghambayracing.org](mailto:RC@hinghambayracing.org)

## Marks

- All rounding marks will be government marks.
- All MBSA exclusion zones apply.

## Time Limit

- The time limit for all classes will be 8 hours after the start of each class. However, the RC may extend this time limit by broadcast on VHF 68 and/or other means of communicating to the fleet.
- Finish Window will be 3 hours after the first boat in each class finish.

## REGISTRATION

- **\$50.00** – MBSA Discount \$5. \$10 Late Fee after 6/1 @1200 hrs.
- Registration Fee is included in Hingham Bay Racing Season and Weekend Passes which are open to all boats with a valid EZ handicap certificate
- **Online Registration and payment:** [Regattaman.com](http://Regattaman.com)
- **By mail:** Hingham Bay Racing, PO Box 540 Hingham, MA, 02043

## Additional Sailing Instructions

### Rules

- Races will be governed by the MBSA General Sailing Instructions except as modified herein or by the Race Committee

### Classes

- This race will be scored using valid **EZ ratings**, wind ranges and course types to set the handicap at race time.
- Class assignments will be posted on Regattaman no later than 3 hours prior to the scheduled race start.
- Be mindful that multiple classes may share the same start sequence dependent on the number of entrants.

### Flags

- Yachts shall fly their class flag from the backstay.

### Race Committee

- The RC will monitor channel 68.
- Yachts must notify the RC if withdrawing.

### Race Information

- There will be NO Skippers' Meeting.
- Any changes to the sailing instructions or notices to competitors will be posted at [Regattaman.com](http://Regattaman.com) 3 hours prior to the scheduled race start.

### Protests [Must be filed by 1600 hrs. on June 9th]

- All boats intending to file a protest shall notify the Race Committee upon finishing the race and shall file a completed US Sailing Protest Form, via email to: [RC@hinghambayracing.org](mailto:RC@hinghambayracing.org).

### For more information

- Visit us on Facebook or at [www.hinghambayracing.org](http://www.hinghambayracing.org)

### Awards

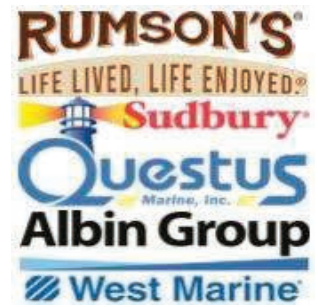
- Trophies will be awarded at a future date.

For registration and race results, visit...  
**REGATTAMAN.COM**

Hingham Bay Racing / 2025



Boston Yacht Club  
Marblehead MA  
Presented in Partnership with Rumson's Rum



## Wednesday Evening Series

May 14<sup>th</sup> – September 17<sup>th</sup>

Skippers Meeting May 7<sup>th</sup>

Season Awards Oct 3<sup>rd</sup>

**Join us for another Wednesday night season.** At summer peak as many as 50 boats come out to break up the week with this classic annual series. First warning is at 17:55. After finishing, come back to the BYC for beers and burgers, and some special themed nights this season. Three of these races will be MBSA Qualifiers!

For more information or to register click the link:

<https://www.bostonyc.org/racing>







## ***The Jubilee Yacht Club Thursday Night Racing Season 2025 (Our 51<sup>st</sup>)***

**Spring: May 22 thru July 24**

**Summer: July 31 thru Oct 2**

***Register Today!***

Use QR Code or click [JYC Registration](#)



Registration

Racing open to all boats with a valid 2025 PHRF-NE certificate.

No handicap certificate will be required for boats entering a one-design class.

Full season: \$225.

Single Series: \$135.

Single Race: \$20.

***BONUS!***

***Thursday Night Racers  
get free registration for The  
Phil Small and The Jubilee  
Regattas!***

***A \$135 value!***

***In addition, your combined  
score for three designated  
Thursday Night Races will  
equal one qualifying race  
toward the MBSA  
Championship.***

***See the 2025 Offshore Racing  
Schedule for dates.***

[MBSA Calendar](#)



MBSA

Racing starts at 1810.

Courses are in Salem Sound.

The Race Committee will use VHF channel 72.

An awards ceremony, burgers and dogs at our outdoor grill and reasonably priced libations available after each race!

Food deliveries from our neighborhood restaurants is allowed.

All racers are welcome.

A limited number of *FREE* guest moorings are available.

Please hail the launch on VHF channel 78.

Detailed Notice of Race

Available at [JYC NOR](#)

Trophies for the Spring and the Summer Series overall winners are presented annually at the JYC Awards Banquet.

# ***Get out there!***



JYC Racing Home

[jycracing.org](http://jycracing.org)





## Notice of Race and Event Sailing Instructions (ESI)

### 2025 - EYC

## SUMMER PURSUIT RACES

EASTERN YACHT CLUB, Marblehead, MA

June 20 (Fri), Aug. 1 (Fri), Aug. 29 (Fri), 2025



**Pursuit racing is simple and fun. Boats start in reverse order according to their ratings with the slowest boats starting first. The first boat around the course wins. Give it a try! First-time as well as experienced racers are all welcome.**

#### 1. RULES

- 1.1 Racing will be governed by the current Racing Rules of Sailing & MBSA GSI except as changed by these ESI.
- 1.2 A boat may take a One-Turn Penalty when she may have broken one or more rules (Changes RRS 44).
- 1.3 Contact between boats is grounds for disqualification of both boats (Changes RRS 14).
- 1.4 All boats shall only use sails per their PHRF rating or Class Rules.

#### 2. REGISTRATION

- 2.1 Open to all PHRF (both Racing and Cruising), and one-design boats. If you do not have a 'PHRF rating certificate' the Race Committee (RC) will assign one. Register at [www.regattaman.com/calendar.php?reg=MBSA|MBSA-N](http://www.regattaman.com/calendar.php?reg=MBSA|MBSA-N). The RC may adjust handicaps to facilitate competition.
- 2.2 Registration must be before 2100 hours the day before the race. Late entries may be accepted at the discretion of the RC. See Regattaman.com for an up-to-date scratch sheet and start time - click on 'View Current Race Entries'. There is **NO FEE** required to register for this race.
- 2.3 At registration select the Division either Cruising (JAM – jib/main only) or Racing (Spinnaker) you wish to be scored in.

#### 3. SCHEDULE OF RACES

The first start shall be approximately 1800 hours for June and Aug. 1<sup>st</sup> races, and 1730 hours for the Aug. 29th race.

#### 4. THE COURSES

- 4.1 The description of the possible course will be provided in an Addendum to the Sailing Instructions. Copies will be available at the EYC Sailing Center and on the Regattaman website at [www.regattaman.com](http://www.regattaman.com). The course length will range from 2 nm to 10 nm. The course to be sailed will be signaled by flags on the RC signal boat.
- 4.2 The starting area shall be between the mouth of Marblehead Harbor and Children's Island.
- 4.3 Shortening of a race shall be between a blue flag on a race committee boat and the nearest mark of the course.

#### 5. MARKS

Marks shall be government navigation buoys or orange tetrahedrons or MarkBot.

#### 6. THE START

- 6.1 The starting line shall be between a staff on ETO bearing an orange flag and a green tetrahedron or a MarkBot. The mark may be replaced by another RC boat bearing an orange flag.
- 6.2 A code flag 'W' will be raised with one sound signal at the beginning of the start time sequence.
- 6.3 Each boat will start according to her rating with slower boats going first. Copies of the starting times will be available on the [www.regattaman.com](http://www.regattaman.com) website.
- 6.4 The RC will attempt to do a countdown (at 1 min. and 10 sec.) for each boat's start - broadcast on VHF 72.
- 6.5 OSC boats that start prematurely shall restart by rounding either end of the starting line – no dip restarts are allowed.

#### 7. THE FINISH

The finish line shall be between a staff on an RC boat bearing a blue flag and a green tetrahedron or a MarkBot.

#### 8. TIME LIMITS

For the Friday races - 15 minutes before sunset. Time may be extended by a broadcast from the RC on 72.

#### 9. SCORING

Boats shall be scored based on their finishing position.

#### 10. PROTESTS AND REQUESTS FOR REDRESS

Since this is informal racing, competitors are urged to avoid possible protest situations. If this is not possible, you are encouraged to take a One-Turn Penalty as per 1.2.

#### 11. SAFETY

- 11.1 All boats shall have a working VHF radio, navigation lights in accordance with USCG regulations, current distress flares, an operational flashlight, and an engine or designated tow line.
- 11.2 A boat retiring from racing or in distress shall notify the RC on VHF channel 72 at the earliest opportunity.

#### 12. POST-RACE

Come socialize and enjoy COMPLIMENTARY FOOD and a chit/credit card bar at the EYC Sailing Center post-race.



# SOLSTICE REGATTA

FRIDAY / JUNE 20, 2025

COME RACE WITH US AROUND THE ISLANDS ON THE LONGEST DAY OF THE YEAR!  
A MBSA and Hingham Bay Qualifier

## Start Time

- First gun at 1600 hours
- One race is scheduled

## Time Limit

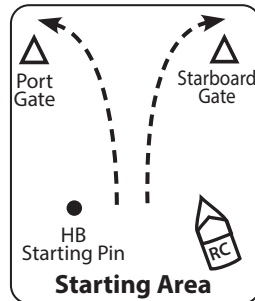
- Must finish by 2000 Hours

## Starting Area

- The vicinity of Hospital Shoals buoy, Mass Bay mark 32 from List C.

## Course

- Island(s) to be circumnavigated will be listed by fleet on the committee boat.
- Boats start in the direction of the designated first mark and will leave the mark to the designated side (port or starboard) before beginning the listed islands. This mark could be a gate marked with inflatable tetrahedrons.
- The listed islands may be circumnavigated in either direction and in any order.
- After completing the listed islands, all boats will pass between the committee boat and the starting pin in either direction (providing the RC an opportunity to shorten course), then complete an additional circumnavigation of Peddock's Island.
- Boats may pass between the committee boat and starting pin in either direction to finish the race.
- Participants are reminded to observe the restricted areas listed in the MBSA General Sailing Instructions.



## Finish Line

- Hingham Bay Starting Buoy (200yd N Of Sheep Is.)

## REGISTRATION

- **\$50.00** – MBSA Discount \$5. \$10 Late Fee after 6/13 @1200 hrs..
- Registration Fee is included in Hingham Bay Racing Season and Weekend Passes which are open to all boats with a valid EZ handicap certificate
- **Online Registration and payment:** Regattaman.com
- **By mail:** Hingham Bay Racing, PO Box 540 Hingham, MA, 02043

## Rules

- Races will be governed by the MBSA General Sailing Instructions except as modified herein or by the Race Committee

## Classes

- This race will be scored using valid EZ ratings, wind ranges and course types to set the handicap at race time.
- Class assignments will be posted on Regattaman no later than 3 hours prior to the scheduled race start.
- Be mindful that multiple classes may share the same start sequence dependent on the number of entrants.

## Flags

- Yachts shall fly their class flag from the backstay.

## Race Committee

- The RC will monitor channel 68.
- Yachts must notify the RC if withdrawing.

## Race Information

- There will be NO Skippers' Meeting.
- Any changes to the sailing instructions or notices to competitors will be posted at Regattaman.com 3 hours prior to the scheduled race start.

## Protests [Must be filed by 1600 hrs. on June 21st]

- All boats intending to file a protest shall notify the Race Committee upon finishing the race and shall file a completed US Sailing Protest Form, via email to: [RC@hinghambayracing.org](mailto:RC@hinghambayracing.org)

## For more information

- Visit us on Facebook or at [www.hinghambayracing.org](http://www.hinghambayracing.org)

## Post-Race Reception

- Cocktails will be served at the Hull Yacht Club. Moorings Available.

## Awards

- Trophies will be awarded at a future date.

For registration and race results, visit...  
**REGATTAMAN.COM**

Hingham Bay Racing / 2025





CONSTITUTION  
YACHT CLUB

# SPRING REGATTA

## Saturday June 21, 2025

To Register Visit:  
[www.cycboston.org/calendar](http://www.cycboston.org/calendar)

Regattaman Registration



### VITAL INFO

#### Start Time

First gun at 12:00

#### Starting Area

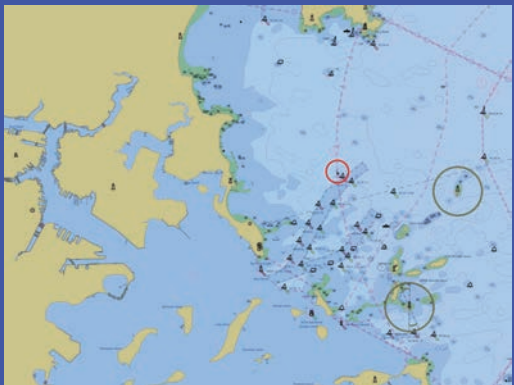
Vicinity of MBSA List C Mark 1  
Finn's Ledge  
Boston North Channel Bell R"2"

#### Divisions

Spinnaker  
JAM  
Short-Handed

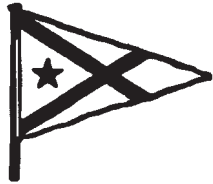
#### Awards Party

Begins at 17:30 @ Savin Hill  
Yacht Club



### LET'S PARTY!

The Spring Regatta will be followed by an Awards Party with drinks and refreshments at the Savin Hill Yacht Club. Please RSVP by 6/18 to ensure there is enough food and drink for everyone!



# 72nd MEMORIAL PATTON BOWL

Manchester Yacht Club



**Sunday, June 22, 2025**

- 1.1 **Event:** The 72nd Memorial Patton Bowl hosted by the Manchester Yacht Club (MYC), on Sunday, June 22nd in Manchester, MA.
- 2.1 **Eligibility:** All boats with a valid ORR-ez rating certificate. Classes will be in accordance with MBSA class splits. A start will be given to any class with at least five competitors. Depending on the number of entries, some classes may be combined for a joint start. Classes will be scored independently for MBSA scoring.
- 2.2 **Registration:** Register on-line at [www.regattaman.com](http://www.regattaman.com). Entries must be received by 1600 hours June 21st.  
Contact: Tony Leggett (617) 756-2719, email [race@manchesteryc.org](mailto:race@manchesteryc.org).
- 2.3 **Fees:** The entry fee will be \$70.00 (\$5 discount for US Sailing members, additional \$5 discount for MBSA members). Late entries (\$5.00 late fee) will be entered at the discretion of the Race Committee.
- 2.4 **Handicap System:** ORR-ez Time on Time will be used.
- 3 **Rules:** This event will be governed by the Mass Bay Sailing Association General Sailing Instructions, except as changed by these Event Sailing Instructions.
- 4 **Notices to Competitors:** Notices will be posted on the official notice board at the MYC clubhouse. Race notification updates may be broadcast over VHF Channel 72 at 1000 and 1100 on the day of the race. The Race Committee will also monitor channel 72 until the last finish. Scratch sheets will be available at [www.Regattaman.com](http://www.Regattaman.com). Any changes to these Event Sailing Instructions will be announced on VHF channel 72 from the race committee boat TRIDENT on station before the first warning signal of the day.
- 7.1 **Schedule of Races:** One distance race is scheduled.
- 7.2 **Warning Signal:** The first Warning Signal will be made at 1200. The time interval between the start of one class and the warning signal for the subsequent class will be at least one minute.
- 7.3 **Check-in Before Start:** All boats must check-in by sailing past the race committee boat TRIDENT before the first warning signal of the day. All boats must report sail number, boat name and number of racers onboard.
- 9 **Racing Area:** The starting area will be in the vicinity of Gales Ledge Nun Buoy RN "6" unless the race committee boat TRIDENT displays code flag "L" and proceeds elsewhere. Racers are reminded to observe the RESTRICTED AREAS around Bakers Island as listed in the MBSA GSI.
- 11 **Marks:** Marks will be in accordance with MBSA Standard Rounding Marks Lists A and B (although MBSA Standard Courses may be used). Portable marks will be orange inflatable marks. Any mark changes will be announced by the Race Committee on VHF Channel 72. Green inflatable marks will be used for the start and/or finish marks.
- 14.2 **Recalls:** The Race Committee will use VHF channel 72.
- 17.1 **Time Limit:** The time limit for the race shall be 4 hours after the start of each class. Any yacht that has not finished within 30 minutes after the first yacht in its class to finish will be scored OTL (Over Time Limit) and will be given a finishing position one lower than the last boat to have finished within the time limit.
- 24 **Prizes:** First place trophies will be awarded to each starting class and second and third place trophies will be awarded for each starting class with four or more starters, respectively.

**Social Activities & Awards:** All captains, crews and their guests are invited to the Manchester Yacht Club following the race at approximately 1630. There will be a cash bar along with free chowder and refreshments. Trophies will be presented.





## Notice of Race and Event Sailing Instructions (ESI)

# LAMBERT OVERNIGHT OCEAN RACE

EASTERN YACHT CLUB  
Marblehead, Massachusetts USA

Friday, June 27, 2025



Select a short (60+ nm) or a 90+ nm course that is a perfect tune-up for the Marblehead-to-Halifax Race. This race is a **QUALIFIER** for the Mass Bay Sailing Association Shorthanded Championship.

- 2.1 **Eligibility:** This race is open to all Massachusetts Bay Sailing Association classes. There will be a Shorthanded / Doublehanded (SH/DH) Division.
  - 2.2 **Registration:** Online registration at [www.regattaman.com/calendar.php?reg=MBSA|MBSA-N](http://www.regattaman.com/calendar.php?reg=MBSA|MBSA-N) shall be done no later than 1800 hours on the day before the race begins. Late entries may be accepted at the discretion of the Race Committee (RC).
  - 2.3 **Fees:** The entry fee is \$200 (\$5 discount for US Sailing members, additional \$5 discount for MBSA members). Get an 'early entry' discount of \$20 by registering on or before June 13<sup>th</sup>. Take advantage of the Plan Early / Pay Later feature.
  - 2.4 **Handicap System:** The ORR-ez/PCS, Time on Distance handicapping will be used.
  - 2.5 **Tracking:** Each boat shall carry a functional 'YB' GPS satellite tracking unit to be active during the entire race. These units will be supplied without charge and distributed at Skipper's meeting.
  - 3 **Rules:** This event will be governed by the Racing Rules of Sailing and the Mass Bay Sailing Association - General Sailing Instructions except as changed by these Event Sailing Instructions (ESI).
    - (a) The US Sailing - Safety Equipment Requirements (SER) – current edition, for "coastal" class races.
    - (b) Autopilots are permitted for the Shorthanded Division. This changes RRS 52.
  - 4 **Notices to Competitors:** Notices and changes to Sailing Instructions (SI) will be posted on the Official Notice Board located in the EYC Sailing Center and will be available in this event's section on [www.regattaman.com](http://www.regattaman.com). All competitors shall monitor VHF Channel 72 on the water until their start signal to receive possible oral changes to the SI's.
  - 5 **Skippers Meeting:** A mandatory skippers meeting in the EYC Sailing Center at 1900 hrs. on Thurs., June 26<sup>th</sup>.
  - 6.1 **Signals Made Ashore:** Will be displayed on the yardarm of the EYC Flagpole.
  - 7.1 **Schedule of Races:** One race is scheduled for each class.
  - 7.2 **Warning Signal:** The first racing Class warning signal will be made at 1600 hrs.
  - 9 **Racing Area:** The Start and Finish will be in the vicinity of the Marblehead Bell - RG"FR", MBSA List B, Mark 3.
  - 10.1 **The Course:** There are several possible courses. Some courses go north to the Isle of Shoals and others go south toward Cape Cod Bay. Long courses are 90+/- nm and shorter courses are 60+/- nm. The Race Committee will select the course. Classes A, B, C, and F will normally complete the long course, however, any boat may elect to do the short course. Class D and G will complete the short course. Shorthanded entries will do the long course. Charts and descriptions of each course will be included in the Sailing Instructions.
  - 11 **Marks:** All rounding marks will be Government Marks.
  - 14.2 **Recalls:** The Race Committee will attempt to broadcast the sail number or boat name of OCS boats on VHF channel 72.
  - 17.1 **Time Limit:** The time limit for all Classes will be 1530 hrs. on Saturday, June 28. However, the Race Committee may extend this time limit by a broadcast over VHF channel 72 and/or with other means of communicating with the fleets.
  - 17.2 **Finishing Window:** This is 4 hours after the first boat in each Class finishes and may be extended by the RC.
  - 19 **Protests:** Submit Protest/Hearing Forms within one hour after finishing. Get the form at [www.easternyc.org/protest-form](http://www.easternyc.org/protest-form). Deliver to EYC Sailing Center or submit electronically to [protest@easternyc.org](mailto:protest@easternyc.org). Photograph or scan diagrams and submit with email. The hearing will be held in person or by Zoom at a mutually agreed-upon time.
  - 24 **Prizes:** Trophies will be awarded to the boat with the best corrected time in each class with three or more entries. Second and third-place trophies will be awarded to classes with six and ten or more entries, respectively. The Gerard Barnes Lambert Trophy will be awarded to the winners in Classes A and B. The Chesterton Bowl will be awarded to the winners in Classes C and D. The Haze Trophy will be awarded to the winner in the Cruising Class. The Periwinkle Trophy will be awarded to the Eastern Yacht Club boat having the best corrected time in the racing classes.
- TROPHY PRESENTATION AND SOCIAL EVENTS:** All captains, crews, and their guests are invited to the Eastern Yacht Club after the race at 1900 hrs. on Saturday, June 28<sup>th</sup> for a 'Lambert Race Party'. Come socialize with your fellow racers at the EYC Sailing Center where trophies will be presented celebrating the accomplishments of the overnight ocean race. COMPLIMENTARY FOOD and a chit/credit card bar will be available.





## Notice of Race and Event Sailing Instructions (ESI)

# FAST MERMAID - Charity Race

EASTERN YACHT CLUB  
Marblehead, Massachusetts

Sunday – June 29, 2025



Pursuit racing is simple and fun. Boats start in reverse order according to their ratings with the slowest boats starting first. The first boat around the course wins. Come have FUN! First-time and experienced racers are all welcome.

**This race is a QUALIFIER for the MBSA Pursuit Championship.**

### 1. RULES

- 1.1 Racing will be governed by The Racing Rules of Sailing & MBSA GSI except as changed by these ESI.
- 1.2 A boat may take a One-Turn Penalty when she may have broken one or more rules (Changes RRS 44).
- 1.3 Contact between boats is grounds for disqualification of both boats (Changes RRS 14).
- 1.4 All boats shall only use sails per their PHRF or Class Rule.

### 2. REGISTRATION

- 2.1 Open to all PHRF, one design, and cruising boats. If you do not have a 'PHRF rating certificate' the Race Committee (RC) will assign a rating. Register at [www.regattaman.com/calendar.php?reg=MBSA/MBSA-N](http://www.regattaman.com/calendar.php?reg=MBSA/MBSA-N). The RC may adjust handicaps to facilitate competition.
- 2.2 Online Registration shall be done no later than 2100 hours the day before the race. Late entries may be accepted at the discretion of the Race Committee. The Regattaman website shows an up-to-date scratch sheet and the start time - click on 'View Current Race Entries'.
- 2.3 Fees: The entry fee is \$90 with a \$5 discount for US Sailing members and another \$5 discount for MBSA members. Get an early entry discount of \$10 by registering before June 15<sup>th</sup>. Take advantage of the Plan Early / Pay Later feature.

**Net proceeds will go to a healthcare fund set up for Lindsay Smith.**

3. **SCHEDULE OF RACES** - Only one race will be held. The first start will be approximately 1330 hours local time.

### 4. THE COURSES

- 4.1 The course will be provided with an Addendum to the Sailing Instructions. Copies will be available at the EYC Sailing Center and on the Regattaman website at [www.regattaman.com](http://www.regattaman.com).
- 4.2 The starting area shall be between the mouth of Marblehead Harbor and Children's Island.
- 4.3 Shortening of a race shall be between a blue flag on a race committee boat and the nearest mark of the course. The RC boat will also display an 'S' flag.

5. **MARKS** - Marks shall be government navigation buoys or orange tetrahedrons or MarkBot.

### 6. THE START

- 6.1 The starting line shall be between a staff on ETO bearing an orange flag and a green tetrahedron or a MarkBot or government mark. The mark may be replaced by another RC boat bearing an orange flag.
- 6.2 A code flag 'W' will be raised with one sound signal at the beginning of the start time sequence.
- 6.3 Each boat will start according to her rating with slower boats going first. Starting time information will be available at the EYC Sailing Center, or the website [www.regattaman.com](http://www.regattaman.com).
- 6.4 The RC will attempt to do a countdown (at 1 min. and 10 sec.) for each boat's start - broadcast on VHF 72
- 6.5 OSC boats shall restart by rounding either end of the starting line – no dip restarts allowed.

### 7. THE FINISH

The finish line shall be between a staff on an RC boat bearing a blue flag and a green tetrahedron or a MarkBot. The mark may be replaced by another RC boat bearing a blue flag.

### 8. TIME LIMITS

The time limit for the race is 4 hours from the first start.

### 9. SCORING

Boats shall be scored based on their finishing position.

### 10. PROTESTS AND REQUESTS FOR REDRESS

Since this is informal racing, competitors are urged to avoid possible protest situations. If this is not possible, you are encouraged to take a One-Turn Penalty as per 1.2.

### 11. SAFETY

A boat retiring from racing or in distress shall notify the RC on VHF channel 72 at the earliest opportunity.

### 12. POST-RACE

All competitors are invited to socialize and celebrate the day's racing at the EYC Sailing Center post-race with Complimentary chowder & hot dogs and a chit/credit card bar.



Boston Yacht Club  
Marblehead MA  
Presented in Partnership with Rumson's Rum



## Care Dimensions Hospice Charity Pursuit Race

New this year we are helping support the Care Dimensions Hospice with a Pursuit Race on Wednesday Night, July 2<sup>nd</sup>. Come join us for a new way to help support our local Hospice. This will be 17:30 Start and a great way to start your 4<sup>th</sup> of July Weekend!

Join us for Awards after the Race at the BYC where our famous grill and bar will be open to all.

For more information or to register click on the link: <https://www.bostonyc.org/racing>





## Notice of Race and Event Sailing Instructions (ESI)

# 155<sup>th</sup> ANNUAL REGATTA

EASTERN YACHT CLUB  
Marblehead, Massachusetts

Friday, July 4, 2025

A **qualifier** for the Mass Bay Season Championship



**Come join us in celebrating a great holiday with a fun day on the water.**

- 2.1 **Eligibility:** This is open to boats with a current PHRF-NE and/or ORRez rating certificate.
- 2.2 **Registration:** Register at [www.regattaman.com/calendar.php?reg=MBSA/MBSA-N](http://www.regattaman.com/calendar.php?reg=MBSA/MBSA-N). Online, Registration shall be done no later than 1500 hours on July 3. Late entries may be accepted at the discretion of the Race Committee (RC).
- 2.3 **Fees:** The entry fee is \$75, with a \$5 discount for US Sailing members and another \$5 discount for MBSA members. Register before 1159 hours on June 20th to get an 'early entry' discount of \$10. Take advantage of the Plan Early / Pay Later feature.
- 2.4 **Handicap System:** Racing Classes (with spinn.) will be based on the ORRez/PCS. JAM Classes will be based on the PHRF Time on Time handicap system.
- 3 **Rules:** The event will be governed by the current Racing Rules of Sailing and the MBSA General Sailing Instructions except as changed by these ESI.
- 4 **Notices to Competitors:** Notices and changes to Sailing Instructions (SI) will be posted on the Official Notice Board located in the EYC Sailing Center and will be on [www.regattaman.com](http://www.regattaman.com). All competitors shall monitor VHF 72 on the water until their start signal to receive possible oral changes to the SI's. There is no Skipper's Meeting.
- 6.1 **Signals Made Ashore:** Will be displayed on the yardarm of the EYC Casey Flagpole.
- 7.1 **Schedule of Races:** A single race is scheduled for each Class.
- 7.2 **Warning Signal:** The first racing Class warning signal will be made at 1230 hrs.
- 9 **Racing Area:** In the vicinity of Tinker's Rock Gong, MBSA List A, Mark D.
- 10.1 **The Course:** The course will round government marks or use MBSA Standard Courses. If a green flag is flown no later than four (4) minutes before the start it means "Mark 1 for the class about to start will be a green tetrahedron. This applies to each rounding of Mark 1 by this class". This changes RRS 27.1 and Race Signals.
- 11 **Marks:** MBSA Standard Rounding Marks, Lists A, and B, or orange tetrahedrons with MBSA Courses. When Mark 1 is orange, a change mark will be a pink tetrahedron, and a subsequent change will revert to orange. When Mark 1 is green, a change mark will be a yellow tetrahedron, and a subsequent change will revert to green.
- 14.2 **Recalls:** The Race Committee will attempt to broadcast the sail numbers of OCS boats on VHF channel 72.
- 17.1 **Time Limit:** Four hours after each Class's start.
- 17.2 **Finish Window:** 45 minutes after the first boat in each class finishes.
- 19 **Protests:** Submit Protest/Hearing Forms within 1 hour of Signal Boat docking. Get the form at [www.easternyc.org/protest-form](http://www.easternyc.org/protest-form) Deliver to EYC Sailing Center or submit electronically to [protest@easternyc.org](mailto:protest@easternyc.org). Photograph or scan diagrams and submit by email. The hearing will be held in person or by Zoom at a mutually agreed-upon time.
- 24 **Prizes:** Trophies will be awarded to the boat with the best corrected time in each class with three or more entries. Second and third-place trophies will be awarded to classes with six and ten or more entries, respectively. The Commodore James J. Storrow Trophy will be awarded to the winners in Classes A and B. The Cleopatra's Barge Cup will be awarded to the winners in Classes C and D. The Gracie Trophy will be awarded to the winner in the Cruising Class. The Puritan Cup will be awarded to the Eastern Yacht Club boat making the best corrected time in the racing classes, and the Guy Norman Cup will be awarded to the Eastern Yacht Club boat making the best corrected time in the Cruising Class. A trophy will be awarded to the winner of any fleet (e.g. IOD, J/70, R19, etc.) racing as a one-design class, with at least six starters.

**TROPHY PRESENTATION AND SOCIAL EVENTS:** All captains, crews, and their guests are invited to the Eastern Yacht Club after the final race. Come socialize with your fellow racers at the EYC Sailing Center where trophies will be presented to celebrate the day's accomplishments.





# **SAT. JULY 5TH**

# **SCITUATE INVITATIONAL**

## **PHRF Pursuit Racing**

The annual Scituate Invitational is a fun sailing event for all abilities. The Scituate Invitational is a qualifying chase race for the Mass Bay pursuit race series.

The Satuit Boat Club is pleased to be able to provide a limited number of free moorings in Scituate Harbor for either Friday or Saturday night. Come race and explore everything Scituate Harbor has to offer. It is recommended that captains register early to secure their mooring before June 26th!

Join us for a post-regatta for drinks, food, and awards ceremony immediately after at the Satuit Boat Club.



**Mass Bay Pursuit  
Qualifier**

---

**Moorings Available  
for Friday or  
Saturday**

---

**Skipper's Meeting at  
11:00**

---

**First Gun at 13:00**

---

**Starting Line at  
Satuit Approach  
Gong  
42°12N / 70°42W**

## **SATUIT BOAT CLUB**

66 Jericho Road  
Scituate, MA 02066

[www.scituatesailing.org](http://www.scituatesailing.org)  
[Race@SatuitBoatClub.Net](mailto:Race@SatuitBoatClub.Net)

July 5<sup>th</sup>, 2025 at 13:00

# The Jubilee Yacht Club Shorthanded Regatta

Friday, July 11, 2025



Jubilee Yacht Club

*A distance race around the Salem Sound/Marblehead area.*

- 1 **Event:** This is a shorthanded race, maximum two people. One division encompassing all racers will be run.
- 2 **Eligibility:** Open to all boats with a valid 2025 PHRF-NE certificate.
- 3 **Registration:** Competitors may enter online at [www.regattaman.com](http://www.regattaman.com).
- 4 **Fees:** \$50.00 less \$5 for USSA, and/or less \$5 for MBSA. JYC Thursday Night Season Pass holders receive free registration.
- 5 **Handicap System:** PHRF Time on Distance will be used.
- 6 **Classes:** There will be one class for this race.
- 7 **Rules:** The Jubilee Yacht Club Shorthanded Regatta will be governed by the Mass Bay Sailing Association General Sailing Instructions except as changed by this Jubilee Yacht Club Shorthanded Regatta NOR.
  - 7.1 **Autopilot:** The use of autopilots is permitted where a boat is single-handed or double-handed. This changes RRS 52.
- 8 **Notices to Competitors:** Notices to competitors will be posted on [www.jycracing.org](http://www.jycracing.org).
- 9 **Schedule of Races:** One race will be held.
- 10 **Race Start Time:** The race will start at 1400 on Friday, July 11, 2025.
- 11 **Racing Area:** Salem Sound, starting in the vicinity of Curtis Point.
- 12 **The Course:** Courses will be posted on the card rack on the JYC Committee Boat, the Mary H.
- 13 **Marks:** MBSA Standard marks will be used.
- 14 **Recalls:** The JYC Race Committee will use VHF channel 72.
- 15 **Time Limit:** The time limit shall be three (3) hours from the start.
- 16 **Prizes:** Trophies will be presented for the First through Third places among the finishers. A "Good Sport" prize will be awarded.
- 17 **Guest Moorings:** A limited number of guest moorings are available free of charge, reserved through [Dockwa](#). A visiting regatta racer should indicate that their vessel will be participating in the Phil Small regatta. There will be no charge for the first night, then the regular rate for any nights thereafter. Reservations are first-come-first-served and include use of launches and club facilities. Please hail the launch on VHF channel 78.

**Social Activities:** As always, skippers, crew, and their guests are welcomed back at the club to participate in the legendary JYC Hospitality.

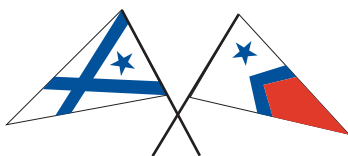


F I F T Y - E I G H T H A N N I V E R S A R Y

# S.S. CROCKER MEMORIAL RACE

SATURDAY JULY 12, 2025

The 58th Annual Crocker Race, in memory of internationally-renowned yacht designer Samuel Sturgis Crocker, will be held Saturday, July 12, 2025. Sponsored jointly by the Manchester Yacht Club and the Manchester Harbor Boat Club, the race is open to all yachts carrying U.S.C.G.-required safety equipment.



This is a fun sailing event for the skipper with little or no racing experience, as well as the seasoned racer. Come and enjoy the friendly atmosphere, excitement of competition, and tradition of this year's race.

## RACE FORMAT

The Crocker Race is a *Full Pursuit Race*.

All boats will use an existing or assigned PHRF rating. Slow boats with high ratings will start first. Faster boats with low ratings will start later.

There will be two classes: (1) Spinnaker/Racing and (2) Jib-and-Main/Cruising.

Within these classes boats will be scored in the finishing order of their respective fleets.

*If you are competing in the Mass Bay Pursuit Series you will receive credit for this race.*

First Start is 10:45 am. (If delayed, all other starts will be delayed by the same amount of time.)

The scratch sheet, noting your class, fleet, and starting time will be posted online at [regattaman.com](http://regattaman.com) and available at the Skipper's Meeting on Friday evening, July 11 at 1930.

## THE COURSE

The Race is sailed on a triangular course of 12.3 miles, using Gales Ledge Buoy, Eastern Point Whistle and Newcomb Ledge Whistle as marks of the course. Each mark is designated by a letter to simplify posting the course. (See race instructions for specific course information.)

## THE AWARDS

Following the Race, skippers and crew are invited to attend a party at the Manchester Yacht Club.

Trophies will be awarded for: • First Overall (S. S. Crocker Memorial Trophy)

• First, Second & Third in each Fleet.

## ADVANCE REGISTRATION REQUIRED

Information and entry forms will be available at [regattaman.com](http://regattaman.com)

*Deadline for registration is July 10, 2025 at 12:00 noon.*

Base Fee: \$70.00 (US Sailing Members -\$5.00; MBSA Members -\$5.00).



SAILING INSTRUCTIONS: MBSA ORC General Sailing Instructions except as modified herein or by specific direction of the Race Committee. ORC Category 4 special regulations are waived.

# CONSTITUTION CUP

**Saturday, July 12th, 2025**

A Mass Bay Qualifying Race

Two Races (if possible)

## **Sponsor:**

Boston Harbor Handicap Racing and CPYC



**ORR-EZ Certificate.**

**Time on Time will be used.**

**Maximum 2 races**

**Start Signal 12:00 Hrs.**

**Announcements VHF 72**

**Rendezvous vicinity of Yellow  
Mark "E" Presidents Roads**

**Eligibility:** In accordance with MBSA Season Championship splits.

**Registration:** Register online at [www.regattaman.com](http://www.regattaman.com)

**Fees:** \$65. MBSA discount \$5.00. Pay online at [www.regattaman.com](http://www.regattaman.com). **Entries must be received by July 11th. Entries after July 11th a \$5.00 late fee.**

**Rules:** This event will be governed by the MBSA General Sailing Instructions except as changed by the Event NOR and Sailing Instructions, which will be posted on [www.regattaman.com](http://www.regattaman.com).



Boats are required to check-in before their first start of the day by passing by the stern of the signal boat.

Boats in the racing area that are not starting a second or subsequent race must notify the Race Committee before leaving the racing area.

Boats that withdraw from racing must advise the Race Committee as soon as reasonably possible.

Non-spinnaker boats may compete in their spinnaker class with non-spinnaker rating.

**Notices to Competitors:** Will be posted on [www.regattaman.com](http://www.regattaman.com).

**Signals to Competitors:** Signals made ashore will be posted on [www.regattaman.com](http://www.regattaman.com) and announced on VHF 72. (Should weather dictate abandoning the regatta prior to the rendezvous, or the RC will make an announcement at approximately 1000 hrs. by VHF, text, and email.)

**Marks:** Marks will be inflatable tetrahedrons.

**Time Limit:** 3 hrs. after the actual starting time of each class. The finishing window shall be 30 minutes after the first boat in each class finishes.

**Scoring:** The low point system will be used.

**Protests and Requests for Redress:** Written protests must be filed on an appropriate form and may be submitted by email within 24 hours to the Fleet Governor at [www.windjammer@cpyc.org](mailto:www.windjammer@cpyc.org). Details of the hearing will then be provided as soon as possible.

**Prizes:** Prizes for top three places depending on the number of competitors in each class and will be presented at CPYC Mass Bay Sailing Awards Event at CPYC, date to be announced.

## **Social:**

**All sailors are invited to the CPYC Sunset Bar following the racing.**

**Contact RC in advance at [www.windjammer@cpyc.org](mailto:www.windjammer@cpyc.org) or Launch driver VHF 78 to arrange for free dockage or mooring**



CORINTHIAN  
YACHT CLUB

# Midsummer Ocean Race

SUNDAY, JULY 13 2025

[regattaman.com/calendar](http://regattaman.com/calendar)

**REGISTER TODAY!**



New Racers! Come enjoy our **entry-level** Pursuit Race  
(and party with us afterward)

- Pre-race tips and discussion
- On-board coaches available by request (limited supply)
- Points for best costume
- Points for most kids under 12
- Points for pets
- Points for ?? (See NoRs)

## VITAL INFO

### PHRF

Spinnaker, Jib and Main

### Start time

First gun at 2:00PM

### Starting Line

In the vicinity of Tinker's Rock  
Gong, MBSA List A Mark D

### Registration

This regatta is free

### Moorings

[jcarney@corinthianyc.org](mailto:jcarney@corinthianyc.org)

781-631-4745

VHF 9

BRUCE DURKEE 2021

BRUCE DURKEE 2021

Boats traveling to Marblehead contact Dockmaster Jack Carney for  
moorings:

[jcarney@corinthianyc.org](mailto:jcarney@corinthianyc.org)

781-631-4745

VHF 9

# *Boston Harbor Ladies Challenge*

*Sunday, July 13*



---

**HOSEA WHITE/SHYC 150 REGATTA**

**SATURDAY, JUNE 14**



**BOTH EVENTS HOSTED BY SAVIN HILL YACHT CLUB**

**NOR AND SI'S AVAILABLE AT [WWW.REGATTAMAN.COM](http://WWW.REGATTAMAN.COM)**

**POST-RACE PARTY AT SHYC**





## Beringer Bowl Overnight Ocean Race

**Beringer Bowl Overnight Ocean Race – Friday 7/18 - Saturday 7/19.** The Beringer Bowl Reserve your slip or mooring at the Provincetown Marina on Dockwa as soon as possible. The race will be like prior years, and the awards party will be epic at the Governor Bradford this year celebrating 26 years of the Beringer.

For information on Dockwa: <https://dockwa.com>

### OCS Start

OCS Class starts at 1200 hrs

Satellite trackers will be used for the OCS Class.

### Overnight race

Race starts at 1900 hrs. The race will use PHRF ratings and time-on-time scoring.

This is an MBSA qualifier including the Doublehanded division.

Satellite trackers will be used for all overnight boats.

For more information or to register click on the link: <https://www.bostonyc.org/racing>

Photo By Bruce Durkee



# Round the Salvages Pursuit Race

## Notice of Race and Sailing Instructions

### Sponsored by Eastern Point Yacht Club

Saturday, July 26th, 2025

- 1.1 **Event:** The Round the Salvages Pursuit Race will be held on July 26th<sup>th</sup>, 2025. The organizing authority is the Eastern Point Yacht Club, Gloucester, MA.
- 2.1 **Eligibility:** The race is open to all boats with a valid PHRF handicap.
- 2.2 **Registration:** Simply go to [www.regattaman.com](http://www.regattaman.com). The registration deadline is 5PM, July 25th.
- 2.3 **Fees:** Entry fee is \$75, minus \$5 for US Sailing Membership and \$5 for MBSA membership.
- 2.4 **Handicap System:** PHRF Time on Distance will be used.
- 3 **Rules:** This Event will be governed by the Mass Bay Sailing Association General Sailing Instructions except as changed by these Event Sailing Instructions. Use of electric winches is permitted in this race; this changes RRS 52.
- 4 **Notices to Competitors:** Notices will be posted on [www.regattaman.com](http://www.regattaman.com). Starting times for each boat, notices of cancellation/postponement, and any changes to sailing instructions will be available by 8:00AM the day of the race. *Pursuit race start times are set according to the slowest boat that registers, so please do not rely upon any start time listed online before then.* Please contact the Race Committee on VHF Channel 73 with questions, starting at 11:00AM the day of the race, or call 978-879-7951 before then.
- 7.1 **Schedule of Races:** There will be one race for all boats. Starting times for all entries will be set according to PHRF handicap. Racing handicaps will apply unless the cruising handicap is selected at registration.
- 7.2 **The Start:** There will be a 5-minute warning signal no earlier than 11:55AM and the P flag will be displayed. The start signal will be made five minutes later and the PHRF flag will be displayed. The highest rated boat may start at or after the start signal, and times available at [www.regattaman.com](http://www.regattaman.com) will be formatted to indicate each boat's starting time after the start signal. The race committee may attempt to make further reference signals at ten minute intervals after the start signal until all boats have started.
- 10.1 **The Course:** The start/finish line will be about 2 miles NE of the Groaner (R "2" Fl R 4s WHIS) which is outside Gloucester Harbor. The coordinates of the start/finish line are 42 34 800 N and 70 36 900 W. The start/finish line will be between the committee boat and a yellow mark. From the start, the race will proceed northeast to the east side of Thatcher Island and the west side of the Londoner. From there the race will proceed to round the following marks to port: G"1" Fl G2.5s Bell (at the Dry Salvages), G"1" Bell (at Flat Ground), G"3" OG Gong (at the north end of the breakwater), and R"2" Fl R 4s (at Avery Ledge and the south end of the breakwater). Then, the race will proceed back to the east side of Thatcher Island and the west side of the Londoner and then back to the start/finish line. The length of this race is about 17.6 miles. In the event of light air, the race committee will designate a shorter course, probably by moving the start/finish line further north.
- 14.2 **Recalls:** Boats that cross the starting time prior to their designated start time will be hailed by the Race Committee on VHF Channel 73.
- 17.1 **Time Limit:** The race will be abandoned if the first boat does not cross the finish line within five hours of the time of the first boat to start. Boats finishing more than one hour after the time limit will be scored DNF (did not finish).
- 24 **Prizes:** Prizes will be awarded for first, second, and third place. **Social Activities:** All captains, crews, and their guests are invited to Eastern Point Yacht Club after the race where there will be a cash bar and light refreshments. Participants are respectfully requested to state their intention to attend to the race committee before the race. **Moorings and rooms:** Race participants may reserve moorings and rooms at Eastern Point Yacht Club (978-283-3520) for the night before and of the race, as well as briefly for post-race festivities. Also, other moorings can be reserved at the Gloucester Harbor Master.



# ***The Jubilee Yacht Club Phil Small Regatta***

***An MBSA Pursuit Race Qualifier  
Salem Sound/Marblehead***

***Saturday August 2, 2025***

Registration: Use QR Code or click [www.regattaman.com](http://www.regattaman.com)

***Register Today!***



***JYC Thursday Night  
Pass holders get free  
registration!!***

## ***Information***

**\$60.00**

**\$5 off for USSA and MBSA.**

**Boats start at an assigned time, based on their valid 2025 PHRF- NE certificate.**

**Start times will be assigned electronically no later than 0930 day of the race. Paper copies available at the JYC Lounge before the race.**

**First start will be no later than 1200 hrs. RC will attempt to do a countdown for each boat's start, to be broadcast on VHF channel 72, but each boat will be responsible for knowing their start time.**

**Two divisions: Spinnaker and Non-spinnaker (JAM).**

**One-Design classes and others may be added to either division at the discretion of the Race Committee.**

**Race governed by MBSA General Sailing Instructions.**

**Course will be detailed in the *Sailing Instructions* available at [www.jycracing.org](http://www.jycracing.org) no later than one week before the race.**



**Trophies for First through Third in the 2 divisions.**

**First place prize is awarded to the first boat to finish in her class, should such class exist, in each division.**

**A limited number of *FREE* guest moorings available through [Dockwa](http://Dockwa)**



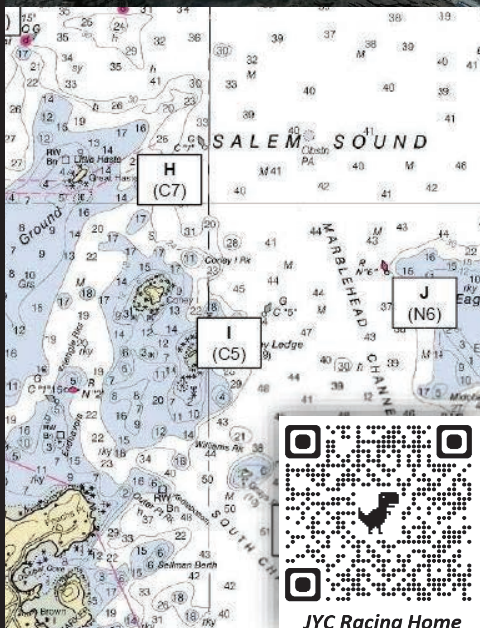
**Guests should make note on Dockwa that they will be racing the Phil Small regatta. No charge for the first night.**

**Reservations are first-come-first-serve. Please hail the launch on VHF channel 78.**

**Come on over to the club for an award ceremony. Enjoy a backyard style barbecue featuring burgers, salads, dogs, music and a cash bar that won't tap you dry.**



***Get out there !***



**JYC Racing Home**





# 31<sup>th</sup> ANNUAL CPYC REGATTA TO BENEFIT MAKE-A-WISH

## QUALIFYING PURSUIT RACE

### AUG 2, 2025



*Come have fun sailing while racing to grant wishes to children with severe illnesses.*

#### Key Information

Open to all ORR-ez, one design and cruising boats. If you do not have an ORR-ez rating certificate, the Race Committee will assign one.

Rendezvous vicinity of Yellow Nun "E", 1.15 miles west of Deer Island Light .

Start time 12:00 noon.

Two divisions:  
Spinnaker and JAM

Two courses: Long Course 13.4 nm, Short Course 8.1 nm.

Time limit is 4:00 PM. If retiring, please notify RC on Channel 72.

Trophies awarded to first three places in each division at Saturday Dinner

**REGISTRATION:** \$75 per boat. Boats registering after Aug 2<sup>nd</sup> are requested to make a voluntary \$25 donation to Make-A-Wish. Register on-line at [www.regattaman.com](http://www.regattaman.com)

**NOTICE TO COMPETITORS** – Notice to Competitors will be posted on [www.regattaman.com](http://www.regattaman.com) .

**CHANGES TO SIPS** – Will be posted before 9AM on the day it will take effect on [www.regattaman.com](http://www.regattaman.com).

**RADIO:** The Pursuit Race Committee will use VHF Channel 72 for communicating with the fleet.

**STARTING** Your assigned start time is the amount of time **AFTER the START**. (Red Flag and Horn).

The Race Committee will make an effort to announce each minute after the start. This notice is informational.

Skippers are responsible for keeping track of their own starting times. Start times are available on [www.regattaman.com](http://www.regattaman.com)

The race committee will use GPS time for all signals. In the event of a Postponement for any reason, the committee will attempt to use GPS time with an exact minute delay of the start. All boats **MUST KEEP CLEAR** of the course side of the starting line from the warning signal until one minute before their starting time. Start times will **not** be given out from the committee boat. There are 4 possible courses.

**PROTESTS AND PENALTIES:** Due to the nature of the race, protests are discouraged. A one-turn penalty replaces RRS Rule 44. If a protest is necessary, protests must be filed appropriately.



#### LONG COURSE

Long Course, 1 or 2 announced by RC

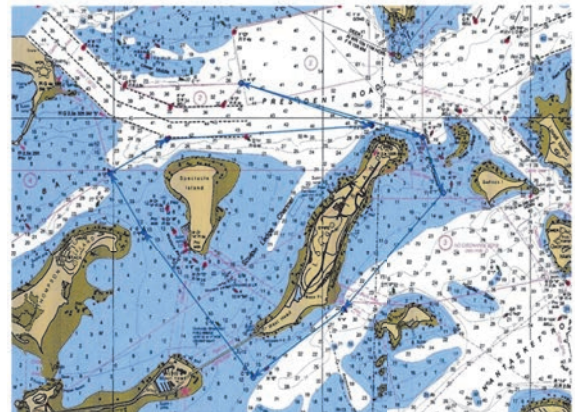


Mark order and turning directions are listed in SIs #10

For More information and complete NOR and Sailing Instructions go to [www.regattaman.com](http://www.regattaman.com)

#### SHORT COURSE

Short Course, 1 or 2 announced by RC



#### SCHEDULE OF EVENTS

Friday Aug 1 <sup>st</sup>	7:00 PM	Skippers Meeting by ZOOM (Invitation to be posted on <a href="http://www.regattaman.com">www.regattaman.com</a> )
Saturday Aug 2 <sup>nd</sup>	12:00 noon	Pursuit Race Start
	6:00 PM	Dinner and Auction
Dinner tickets are \$30 pp and can be purchased at <a href="http://www.cpyc.org/makeawish">www.cpyc.org/makeawish</a>		



# Palmer's Cove Yacht Club



# Mass Bay Shorthanded Regatta

August 3, 2025

Two Divisions - One Start  
Doublehanded / Mixed Doublehanded

For full race details, scan the QR code



[www.pcyicsailing.com](http://www.pcyicsailing.com)

[pcycregatta@gmail.com](mailto:pcycregatta@gmail.com)

# **Cape Ann Challenge**

## **NOTICE OF RACE and SAILING INSTRUCTIONS**

*Sponsored by Annisquam and Eastern Point Yacht Clubs*  
**Saturday, August 9<sup>th</sup>, 2025**

- 1.1 **General:** Each participant is solely responsible for determining that his or her yacht is seaworthy for any and all conditions that might be encountered and for the safety of his or her boat, crew, and guests.
  - 2.1 **Eligibility and Entry:** Yachts will be handicapped according to their PHRF rating. Yachts will be presumed to be competing under their racing rating unless they have (1) indicated that they will be competing under their Cruising Rating on their registration or (2) notified the Annisquam Yacht Club race committee prior to the Warning Signal. Yachts competing under the Cruising Rating may not fly a spinnaker or similar headsail.
  - 2.2 **Fees and Registration:** \$75, minus \$5 for US Sailing members and \$5 for MBSA members. Please register on [www.regattaman.com](http://www.regattaman.com) no later than 5PM, August 8<sup>th</sup>.
  - 3.1 **Rules:** The *Racing Rules of Sailing (2021-2024)* as adopted by the US Sailing Association will govern this event except where specified otherwise by the Sailing Instructions.
  - 3.2 **RRS 52, Manual Power:** RRS 52 shall be amended to allow the use of stored power for the adjustment or operation of running rigging.
  - 4.1 **Notices to Competitors and Skipper's Meeting:** Notices will be posted on <https://www.regattaman.com>. A brief Skippers' Meeting and competitors' reception will be held at the AYC Friday August 8<sup>th</sup> at 1800 (6:00PM) and via Zoom. Log/dial-in instructions will be emailed to registrants after registration closes. Please contact the Annisquam Yacht Club Race Committee on VHF Channel 73 with questions starting at 10:00 a.m. on the day of the race. Prior to the day of the race, please contact Zaak Beekman, R/S Governor, at the AYC, 917-797-3239.
  - 5.1 **Changes to Sailing Instructions:** Any changes to the Sailing Instructions shall be posted on [www.regattaman.com](http://www.regattaman.com) before 8:00AM on the day of the race.
  - 6.1 **Warning Signal:** The warning signal will be given no sooner than 11:55AM. All yachts will start at the same signal after a 5-minute starting sequence and compete for the same prizes.
  - 7.1 **Racing Area:** Race will start at Annisquam and end at Eastern Point.
  - 8.1 **Course:** The starting line will be in the vicinity of the Annisquam Bell [RW "AR" Mo (A)]. The course proceeds around Halibut Point, the Salvages, and the Londoner to the finish line in the vicinity of the Groaner [R "2"] near the mouth of Gloucester Harbor. Boats shall stay to the North and East of the Lanesville Can [CG "1"], the Flat Ground Bell [G "1"], the Dry Salvages Bell [G "1" FI G2.5s], and the Londoner. This course is approximately 15 nautical miles.
  - 8.2 **Additional information:** Yachts must not pass inside Straitsmouth or Thatcher Islands. Yachts must not pass between any 2 of the following buoys: Gong 3 (NW end of Sandy Bay Breakwater), Bell 1 (Flat Ground), Bell 1 (NE of Dry Salvages) and Bell 2 (Avery's Ledge). Cape Ann must be left to starboard. The following buoys and aids to navigation must be left to starboard:
    - Salt Island Nun #4      Londoner Day Beacon (east of Thatcher's Island)
    - NE of Dry Salvages Bell #1      Flat Ground Green Bell #1      Lanesville Can #1
  - 9.1 **Start:** The start line will be in the vicinity of the Annisquam Bell [RW "AR" Mo (A)] between a staff displaying an orange flag or shape on the AYC committee boat and the starting mark. Class flag is flag E
  - 10.1 **Recalls:** The Race Committee will attempt to hail OCS boats on VHF channel 73.
  - 11.1 **Changes:** The Race Committee may shorten the course (code flag S) by finishing the race at any of the marks listed as part of the course in section 8.1.
  - 12.1 **Finish:** The race shall be finished by the EPYC Race Committee in the vicinity of "Groaner #2" off Eastern Point Light. The finish line will be between a staff displaying a blue flag on the EPYC committee boat and the course side of the finish mark.
  - 13.1 **Time Limit:** The time limit shall be 5 hours after the starting signal. Yachts failing to finish within that time will be scored DNF. The time limit may be extended by the Race Committee via announcement on VHF Channel 73. This changes RRS 35.
  - 14.1 **Protests:** Competitors must inform the Race Committee at the finish line of their intent to protest and must receive acknowledgment of said intent from the Race Committee. Protests must be filed on a protest form supplied by the AYC or the EPYC within 1 hour after the Race Committee signal boat docks.
  - 15.1 **Scoring:** The RRS low point system will be used.
  - 16.1 **Safety:** Yachts withdrawing from the race are to notify the Race Committee boat as soon as practicable.
  - 17.1 **Prizes:** There will be 3 prizes.
- Pre-Race Activities:** A racers' social reception will be held the night before the race starting at 6PM and moorings will be made available to competitors on a first-come-first server basis. Please call the AYC to request a mooring and for Friday night dinner reservations.
- Post-Race Activities:** Prizes will be awarded at the EPYC following the race. Complimentary refreshments will be provided. Some moorings may be available; check with EPYC. After the event, sailors are invited to remain and enjoy the amenities of the EPYC at their own expense. Please call in advance for dinner reservations.





COURAGEOUS SAILING



# FLIP FLOP REGATTA

Join us in pursuit of The Courageous Cup! One of the best races of the summer — from Broad Sound, around the Graves and back into Boston Harbor. Awards will be held at Pier 4 following the race. All racers are welcome! Our annual Party on the Pier will follow awards and start at 6pm, open to all!

Proceeds support our mission to transform children's lives through sailing programs that inspire learning, personal growth, and leadership.

REGISTRATION | NOTICE OF RACE  
[COURAGEOUSSAILING.ORG/FFR](https://courageoussailing.org/ffr)



**ALL RACERS  
WELCOME!**

Courageous Sailing is a 501(C)(3)  
nonprofit organization.

**SATURDAY  
AUG 9, 2025**

**PURSUIT RACE**

**LIVEABOARD CLASS**

**AWARDS CELEBRATION**

**DRINKS + FOOD**

SEE WEBSITE FOR DETAILS





# Hingham Yacht Club

## *Commodore Ethan W. Hitchcock Trophy* Sunday / August 10, 2025

### 1. Event

The Hitchcock Trophy is a MBSA and Hingham Bay Racing Season Qualifier

### 2.1 Eligibility

Open to boats with a valid 2025 EZ rating certificate.

### 2.2 Registration

**Entry at:** [www.regattaman.com](http://www.regattaman.com);

**Questions, email:** [racecommittee@hinghamyachtclub.com](mailto:racecommittee@hinghamyachtclub.com)

### 2.3 Fees

**Free entry for any Hingham YC member boats!**

**Entry is also included with:** Hingham Bay Racing Season or Weekend Racing Pass.

**All other entries:** \$50. US Sailing and MBSA members receive a \$5.00 discount.

### 3.0 Rules

This event is governed by the MBSA General Sailing Instructions except as changed by these Event Sailing Instructions.

### 4.0 Notice to Competitors

**There will be no captains meeting.**

Any changes to the sailing instructions or notice to competitors will be posted at [www.regattaman.com](http://www.regattaman.com) three hours prior to the scheduled start of the race. All boats intending to file a protest shall notify the Race Committee (RC); and, complete a written US Sailing Protest Form which must be scanned and emailed to the HYC Race Committee at [racecommittee@hinghamyachtclub.com](mailto:racecommittee@hinghamyachtclub.com) within 24 hours of the incident.

### 6.1 Signals Made Ashore

Displayed on the flagpole at the Hingham Yacht Club.

### 7.1 Schedule of Races

One race is scheduled.

### 7.2 Warning Signal

The first warning signal will be made at 1200 hours.

### 7.3

The Race Committee will monitor Channel 68.

### 9.0 Racing Area

**The starting line:** is between an orange flag displayed on the RC boat and Nantasket Roads Channel Bell G"3" MBSA List C Mark 13; or, another suitable mark determined by the RC.

***Join us for a cookout & awards  
on the deck at the Hingham Yacht Club  
following the race!***

**Please contact the HYC Launch on  
VHF Channel 71 following the race for  
availability of post-race guest moorings.**





## Notice of Race and Event Sailing Instructions (ESI)

# TED HOOD PURSUIT RACE

EASTERN YACHT CLUB, Marblehead, MA USA

August 15, 2025



### \*\*\*\*PRE Ted Hood Regatta Weekend PARTY\*\*\*\*

Eastern and Storm Triesail Clubs invite all boats to enjoy a Pursuit Race before the Ted Hood Regatta (THR) weekend. Registration is open to everyone, not just THR participants. Concurrently, a separate race will start from Boston Harbor to Marblehead for South Shore boats to join the THR weekend. Both races aim to finish simultaneously so all racers can socialize together at Eastern Yacht Club.

#### 1. RULES

- 1.1 Racing will be governed by the current Racing Rules of Sailing & MBSA GSI except as changed by these ESI.
- 1.2 A boat may take a One-Turn Penalty when she may have broken one or more rules (Changes RRS 44).
- 1.3 Contact between boats is grounds for disqualification of both boats (Changes RRS 14).
- 1.4 All boats shall only use sails per their PHRF rating or Class Rules.

#### 2. REGISTRATION

- 2.1 Open to all PHRF (both Racing and Cruising), and one-design boats. If you do not have a 'PHRF rating certificate' the Race Committee (RC) will assign one. Register at [www.regattaman.com/calendar.php?reg=MBSA|MBSA-N](http://www.regattaman.com/calendar.php?reg=MBSA|MBSA-N). The RC may adjust handicaps to facilitate competition.
- 2.2 Registration must be before 2100 hours the day before the race. Late entries may be accepted at the discretion of the RC. See Regattaman.com for an up-to-date scratch sheet and start time. There is **NO FEE** required for this race if you have paid the registration fee for the Ted Hood Regatta otherwise the registration fee is \$25.
- 2.3 At registration select the Division either Cruising (JAM – jib/main only) or Racing (Spinnaker) you wish to be scored in.

#### 3. SCHEDULE OF RACES

The first start for the Marblehead race shall be approximately 1700 hours.

#### 4. THE COURSES

- 4.1 The description of the possible course will be provided in an Addendum to the Sailing Instructions. Copies will be available at the EYC Sailing Center and on the Regattaman website at [www.regattaman.com](http://www.regattaman.com). The course length will range from 2 nm to 10 nm. The course to be sailed will be signaled by flags on the RC signal boat.
- 4.2 The starting area shall be between the mouth of Marblehead Harbor and Children's Island.
- 4.3 Shortening of a race shall be between a blue flag on a race committee boat and the nearest mark of the course.

#### 5. MARKS

Marks shall be government navigation buoys or orange tetrahedrons or MarkBot.

#### 6. THE START

- 6.1 The starting line shall be between a staff on ETO bearing an orange flag and a green tetrahedron or a MarkBot. The mark may be replaced by another RC boat bearing an orange flag.
- 6.2 A code flag 'W' will be raised with one sound signal at the beginning of the start time sequence.
- 6.3 Each boat will start according to her rating with slower boats going first. Copies of the starting times will be available on the [www.regattaman.com](http://www.regattaman.com) website.
- 6.4 The RC will attempt to do a countdown (at 1 min. and 10 sec.) for each boat's start - broadcast on VHF 72.
- 6.5 OSC boats that start prematurely shall restart by rounding either end of the starting line – no dip restarts are allowed.

#### 7. THE FINISH

The finish line shall be between a staff on an RC boat bearing a blue flag and a green tetrahedron or a MarkBot.

#### 8. TIME LIMITS

For the Friday races - 15 minutes before sunset. Time may be extended by a broadcast from the RC on 72.

#### 9. SCORING

Boats shall be scored based on their finishing position.

#### 10. PROTESTS AND REQUESTS FOR REDRESS

Since this is informal racing, competitors are urged to avoid possible protest situations. If this is not possible, you are encouraged to take a One-Turn Penalty as per 1.2.

#### 11. SAFETY

- 11.1 All boats shall have a working VHF radio, navigation lights in accordance with USCG regulations, current distress flares, an operational flashlight, and an engine or designated tow line.
- 11.2 A boat retiring from racing or in distress shall notify the RC on VHF channel 72 at the earliest opportunity.

#### 12. POST-RACE

Come socialize and enjoy complimentary food and a chit/credit card bar at the EYC Sailing Center post-race.



# Storm Trysail Club Ted Hood Regatta

FRIDAY - SUNDAY AUGUST 15-17, 2025

[tedhoodregatta.com](http://tedhoodregatta.com)

## KEY FACTS

### Start Time

Friday through Sunday first warning: 1200 with multiple races to follow. Optional Friday overnight race: 1630

### Rendezvous Area

Racing will be held in Massachusetts Bay outside of Marblehead Harbor.

### Finish Time

No warning signal after 1500 on Sunday.

## REGISTER TODAY



## REGATTA INFORMATION

- Organized by the Storm Trysail Club and hosted by Eastern Yacht Club in Marblehead
- The regatta is open to all boats with a valid PHRF New England or ORRez Certificate, Etchells, Rhodes 19, and Viper 640 Class boats. Other classes may be added at the discretion of the OA.
- The Friday Aug 15th race will be a Pursuit Race from Marblehead Harbor starting at 1600 hrs, and at the same time there will be a feeder race from South of Marblehead to bring boats to the regatta.
- Saturday & Sunday will be windward leeward racing for all classes
- Courses for the overnight race will be government marks
- Daily awards and happy hours will be hosted at Eastern Yacht Club.

## REGISTRATION

- Register on [yachtscoring.com](http://yachtscoring.com)
- Early Bird discounts until July 15, 2025
- Spinnaker or Jib & Main is \$10/foot based on LOA (\$8/ft during Early Bird)
- Overnight Race is \$5/foot (\$3/ft during Early Bird)
- Required fee for Viper 640 classes is \$220 (\$200 during Early Bird)
- A representative from each yacht should appear at Check In on August 14 (or 15th AM) to obtain class assignments and scratch sheets, bow stickers and class flags, and to turn in the Crew Waiver Form. All shore events will take place at the Eastern Yacht Club.

## ADDITIONAL SAILING INSTRUCTIONS

### Rules

- The regatta will be governed by the rules as defined in The Racing Rules of Sailing (RRS); the 2025 PHRF New England (PHRF-NE), and ORRez policies, procedures and by-laws; One-design class rules for one-design.

### Classes

- PHRF and ORRez will be divided into smaller classes and scratch sheets will be available on August 15.
- For all PHRF and ORRez classes ONLY, boats may carry one additional crewmember less than 14 years of age. This additional crew member will not be included in the maximum crew number or crew weight.

### Flags

- Signals made ashore will be displayed at the yardarm of the Casey Flagpole at the Eastern Yacht Club. Other clubs may display flags as a courtesy only.

### Race Committee

- Race Committee will make an announcement at 1030 with intentions for the day on VHF Channel 72
- On the water, One-Design Circle will be VHF Channel 71 PHRF and ORRez Circle VHF Channel 72

### Schedule

- **Thursday August 14**
- 1700 – 1900: Registration and Happy Hour, Eastern YC
- 1900: Skippers Meeting, Eastern YC
- **Friday August 15**
- 1600: Pursuit Race Marblehead
- 1600: Feeder Race South Shore
- 1900: Post Race Party, Eastern YC
- **Saturday August 17:**
- 1200: First Warning Signal for All classes. Multiple races to follow.
- 1700: Happy Hour and Daily Awards, Eastern YC
- **Sunday August 18**
- 1200: First Warning Signal for All classes Multiple races to follow.
- 1500: No Warning signal after this time.
- 1700: Happy Hour, Daily & Overall Awards, Eastern YC

\*Schedule subject to change. Sailing Instructions will be posted to [yachtscoring.com](http://yachtscoring.com) with final schedule.

## JOIN US AFTER RACING!

Daily awards and happy hour socials will be hosted at Eastern Yacht Club featuring delicious cocktails from our friends at Rumson's Rum and Regatta Craft Mixers. Fees include wristbands for access to postrace socials for all crew members registered per your entry.



# MYC Clemson Chase Race

## Sunday, August 24, 2025



### NOTICE OF RACE

**1.1 Event:** Marblehead Yacht Club Clemson Chase Race, Sunday August 24, 2025 at 1200 hours. This is a fun, low key event for captains who have little or no racing experience, as well as the seasoned racer. You will be given your own individual starting time based on your boat's handicap. This often eliminates the crowded and intimidating starting line. The slowest handicap boats go first, and the faster boats go later. The object is for faster and slower boats to finish about the same time. **This race is a qualifier for the Mass Bay Sailing Association (MBSA) Pursuit Race Championship.**

**2.1 Eligibility:** Open to boats with a valid 2025 ORR-ez rating certificate. Boats without an ORR-ez certificate shall be assigned an uncontestable rating.

**2.2 Registration:** Entry and payment at [www.regattaman.com](http://www.regattaman.com) no later than 1800 hours on Saturday August 23, 2025 including the entry fee.

**2.3 Fees:** \$50 less discount of \$5 for 2025 MBSA Members, payable on [www.regattaman.com](http://www.regattaman.com).

**2.4 Handicap System:** ORR-ez Time on Distance will be used.

**3.0 Rules:** This event shall be governed by MBSA [www.massbaysailing.org](http://www.massbaysailing.org) General Sailing Instructions except as changed by these Event Sailing Instructions. Due to the nature of this "FUN" event, protests are discouraged.

**4.0 Notice to Competitors:** Final sailing instructions, including, but not limited to scratch sheets, starting times, and course descriptions will be available on [www.regattaman.com](http://www.regattaman.com) by 2100 hours, Friday August 22, 2025. There will be no skippers meeting and no signals made ashore.

**7.1 Schedule of Races:** One pursuit race is scheduled.

**7.2 Warning Signal:** The first warning signal will be made at 1155 hours (GPS time), the first start at 1200 hours with each boat following at her own designated time.

**9.0 Racing Area:** Start and finish line will be between a race committee boat displaying "RC" flag and Marblehead Channel Bell (15-FT RK Bell) RG "FR" 42.30.2426N 70.49.0773W.

**10.1 The Course:** US Coast Guard Government marks will be used.

**13.2 Start:** Boats must start at or after their assigned starting time.

**14.2 Recalls:** The Race Committee will use VHF channel 72.

**17.1 Time Limit:** Four hours after the start of the first boat.

**24.0 Prizes:** Trophies will be awarded for First, Second and Third place finishers for each class (Spinnaker and Non-Spin)



**All captains and crew are invited to the Marblehead Yacht Club (VHF 71) for the event awards and social activities sponsored by Rumson Rum and Rising Tide Brewing Company immediately following the race.**





# 39th Annual *JFK* Regatta Cottage Park Yacht Club

Sunday, August 24th, 2025

A MBSA Qualifier

*For More information and complete Sailing Instructions go to*  
[www.regattaman.com](http://www.regattaman.com)

## KEY FACTS

Start Time 1200 hrs.

Racing Area—Rendezvous  
11:30 AM in vicinity of Yellow  
Nun “E” 2.25 NM west of Deer  
Island

ORR-ez Certificate required.

2 races if possible.

VHF Channel 72



**REGISTRATION:** Register online at [www.regattaman.com](http://www.regattaman.com)

**FEES:** \$65. Mass Bay sailing member discount \$5.00. Register at [www.regattaman.com](http://www.regattaman.com) Entries must be received by August 24th.

**HANDICAP SYSTEM:** Time on Time will be used. ORR-ez certificate **required**.

**RULES:** This event will be governed by the MBSA General Sailing Instructions except as changed by the Event Sailing Instructions, which will be posted on [www.regattaman.com](http://www.regattaman.com).

**NOTICES TO COMPETITORS;** Notices to competitors will be posted on [www.regattaman.com](http://www.regattaman.com).

**CHANGES TO THE SAILING INSTRUCTIONS:** Will be posted on [www.regattaman.com](http://www.regattaman.com)

**SIGNALS MADE ASHORE:** Signals made ashore will be posted on [www.regattaman.com](http://www.regattaman.com) , and by VHF 72.

**COURSE AND MARKS:** Marks will be inflatable tetrahedrons.

**START:** MBSA classes A, B, C, D, F, and G will start in that order in accordance with RRS 26. The RC may combine classes based on the number of registered boats.

**TIME LIMIT:** 3 hrs. after the actual starting time of each class. The finishing window shall be 30 minutes after the first boat in each class finishes.

**PROTESTS:** Written protests must be filed on the appropriate form and may be submitted by email within 24 hours to the Fleet Governor at [www.windjammer@cpyc.org](mailto:www.windjammer@cpyc.org). Details of the hearing will then be provided as soon as possible.

**SCORING:** The low point system will be used.

**PRIZES:** Prizes will be presented to three places in class depending on number of entries at CPYC conjunction with Mass Bay Sailing Awards Night at CPYC . Date to be announced. Additionally, the names of first place winners of each class will be added to the Perpetual JFK Trophy at CPYC.

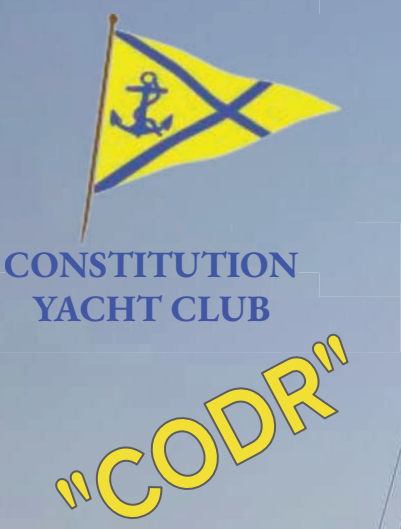


**All sailors are invited to the CPYC Sunset Bar and entertainment following the evening racing.**

**Contact RC in advance at [www.windjammer@cpyc.org](mailto:www.windjammer@cpyc.org) or Launch driver VHF 78**

**to arrange for free dockage or mooring.**





# CONSTITUTION OVERNIGHT DISTANCE RACE

Friday August 29, 2025

To Register Visit:  
[www.cycboston.org/calendar](http://www.cycboston.org/calendar)

Regattaman Registration



## DOUBLE MBSA POINTS

### VITAL INFO

Start Time	Starting Area	Divisions	Courses	Registration
First Gun 18:30	Yellow Nun "E" Anchorage Area	Spinnaker Jib & Main Short-Handed	6 Courses Available 40-60 NM	\$55 Entry Fee \$5 MBSA Discount \$5 CYC Discount

# Bobby Veltman Memorial Race

## Notice of Race and Sailing Instructions

### Sponsored by Eastern Point Yacht Club

### and The RhumbLine Restaurant

Saturday, August 30th, 2025

- 1.1 **Event:** The Bobby Veltman Memorial Race will be held on August 30<sup>th</sup>, 2025. The organizing authority is the Eastern Point Yacht Club, Gloucester, MA.
- 2.1 **Eligibility:** The race is open to all boats with a valid PHRF handicap.
- 2.2 **Registration:** Simply go to [www.regattaman.com](http://www.regattaman.com). The registration deadline is 5PM, August 29th.
- 2.3 **Fees:** Entry fee is \$75 minus \$5 for US Sailing Membership and \$5 for MBSA membership
- 2.1 **Handicap System:** PHRF Time on Distance will be used.
- 3 **Rules:** This Event will be governed by the Mass Bay Sailing Association General Sailing Instructions except as changed by these Event Sailing Instructions. Use of electric winches is permitted in this race. This changes RRS 52.
- 4 **Notices to Competitors:** Notices will be posted on [www.regattaman.com](http://www.regattaman.com). Starting times for each boat, notices of cancellation/postponement, and any changes to sailing instructions will be available by 8:00AM the day of the race. *Pursuit race start times are set according to the slowest boat that registers, so please do not rely upon any start time listed online before then.* Please contact the Race Committee on VHF Channel 73 with questions, starting at 11:00AM the day of the race, or call 978-879-7951 before then.
- 7.1 **Schedule of Races:** There will be one race for all boats. Starting times for all entries will be set according to PHRF handicap. Racing handicaps will apply unless the cruising handicap is selected at registration.
- 7.2 **The Start:** There will be a 5-minute warning signal no earlier than 11:55AM and the P flag will be displayed. The start signal will be made five minutes later and the PHRF flag will be displayed. The highest rated boat may start at or after the start signal, and times available at [www.regattaman.com](http://www.regattaman.com) will be formatted to indicate each boat's starting time after the start signal. The race committee may attempt to make further reference signals at ten minute intervals after the start signal until all boats have started.
- 10.1 **The Course:** The coordinates of the start/finish line are near Kettle Ledge at 42 32.600 N and 70 41.600 W. The first part of the course will be a triangle beginning at the starting line, rounding two marks, and ending at the starting mark. The race will proceed clockwise (course A, all buoys to starboard) or counter-clockwise (Course B, all buoys to port). Mark 1 is the government mark at Newcomb Ledge (G1) and Mark 2 is a race buoy set the same distance away from the start/finish line at N 42 30.527 and W 70 38.886. The second part of the course will be out to either Mark 1 or 2 and back to the start/finish line. The race committee will announce the course no later than 11:30AM, designating either A or B and Mark 1 or 2 to use for the second part of the course. The length of this race is about 15.58 nautical miles. In the event of light air, the race committee will designate a shorter course.
- 14.2 **Recalls:** Boats that cross the starting line prior to their designated start time will be hailed by the Race Committee on VHF Channel 73.
- 17.1 **Time Limit:** The race will be abandoned if the first boat does not cross the finish line within five hours of the time of the first boat to start. Boats finishing more than one hour after the time limit will be scored DNF (did not finish).
- 24 **Prizes:** Prizes will be awarded for first, second, and third place. **Social Activities:** All captains, crews, and their guests are invited to the Rhumb Line at 40 Railroad Ave in Gloucester after the race where there will be a cash bar and light refreshments. **Moorings and rooms:** Race participants may reserve moorings and rooms at Eastern Point Yacht Club (978-283-3520) for the night before and of the race. Also, other moorings can be reserved at the Gloucester Harbor Master.



## Sail Salem Labor Day Regatta

The Sail Salem Pursuit Regatta will be hosted on Labor Day, Monday September 1st, 2025.

Proceeds benefit the Sail Salem Organization, a youth community boating center in Salem MA.

Chowder and Hot Dog's, Rumson's Rum, and Awards Party afterwards back at the BYC. Join us for this annual tradition!

For more information or to register click on the link: <https://www.bostonyc.org/racing>







# ***The Jubilee Yacht Club Jubilee Regatta***

***An MBSA Qualifier  
Salem Sound/Marblehead***

***Saturday September 6, 2025***

Registration: Use QR Code or click [www.regattaman.com](http://www.regattaman.com)

***Register Today!***



***JYC Thursday Night  
Pass holders get free  
registration!!***

Notices to competitors will be posted on [www.jycracing.org](http://www.jycracing.org)



JYC Racing Home

***Let's Go!***

***Detailed NOR's  
at Regattaman***

***Information***

**\$75.00**

**\$5 off for USSA and MBSA.**

**Prizes will be awarded for the first and second place finishers in each class.**

**Open to all boats with a valid 2025 PHRF- NE certificate.**

**Standard MBSA classes, to include Spinnaker and Non-spinnaker (JAM).**

**One-design classes may be specified at the discretion of the RC (target five boats).**

**No handicap certificate will be required for boats entering a one-design class.**

**Regatta governed by the MBSA General Sailing Instructions except as changed by the JYC Sailing Instructions.**

**Up to three races will be held.**

**The warning for the first fleet will be 1100.**

**The Racing Area will be Salem Sound, starting in the vicinity of Curtis Point.**

**The Course: Standard MBSA Rounding Marks (Lists A & B) or MBSA Standard Courses using inflatable marks.**

**Recalls: The RC will use VHF channel 72.**

**Time limit shall be two (2) hours from the start of each class.**

**Come on over to the club for an award ceremony. Enjoy a backyard style barbecue featuring burgers, salads, dogs, music and a cash bar that won't tap you dry.**



***Get out there !***

**A limited number of *FREE* guest moorings available through [Dockwa](http://Dockwa)**



Dockwa



**Guests should make note on Dockwa that they will be racing the Jubilee regatta. No charge for the first night.**

**Reservations are first-come-first-serve. Please hail the launch on VHF channel 78.**



Boston Yacht Club  
Marblehead MA  
Presented in Partnership with Rumson's Rum



## James R. Hodder Regatta

**New date this season!** The 2025 running of the James R. Hodder Ocean Race will be September 6th, 2025.

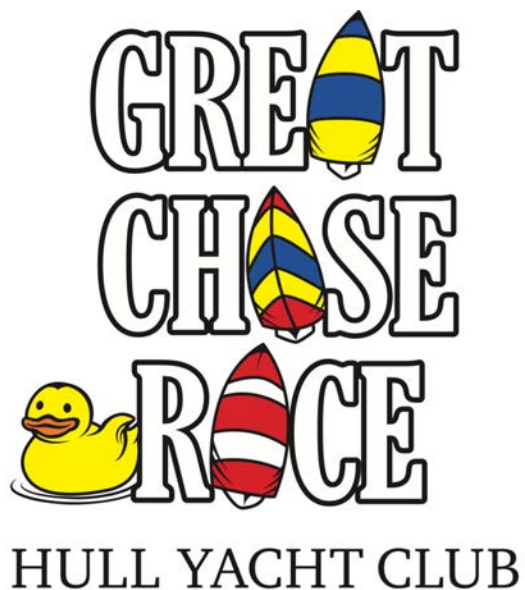
Classic Ocean Race with fun awards party afterwards with Chowder and Hot Dogs. The James R. Hodder Trophy will be awarded for first place in Class A.

For more information or to register click on the link: <https://www.bostonyc.org/racing>

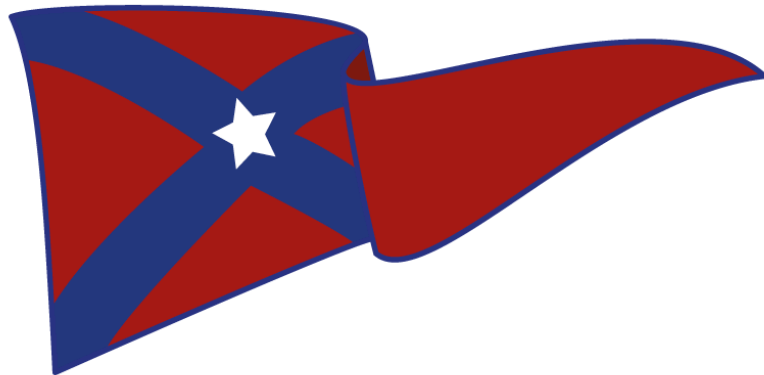
Photo By Bruce Durkee







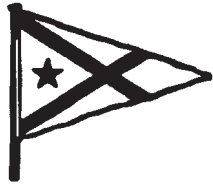
**Mark Your Calendars**



✶ Kate Richardsson

**September 13, 2025**  
**[gretchaserace@gmail.com](mailto:gretchaserace@gmail.com)**





# MANCHESTER FALL SERIES

Manchester Yacht Club

Sunday, September 14, 2025



- 1.1 **Event:** The Manchester Fall Series hosted by the Manchester Yacht Club (MYC), on Sunday, September 14th in Manchester, MA.
- 2.1 **Eligibility:** All boats with a valid ORR-ez rating certificate. Classes will be in accordance with MBSA class splits. A start will be given to any class with at least five competitors. Depending on the number of entries, some classes may be combined for a joint start. Classes will be scored independently for MBSA scoring.
- 2.2 **Registration:** Register on-line at [www.regattaman.com](http://www.regattaman.com). Entries must be received by 1600 hours September 13<sup>th</sup>. Contact: Tony Leggett (617) 756-2719, email [race@manchesteryc.org](mailto:race@manchesteryc.org).
- 2.3 **Fees:** The entry fee will be \$70.00 (\$5 discount for US Sailing members, additional \$5 discount for MBSA members). Late entries (\$5.00 late fee) will be entered at the discretion of Race Committee.
- 2.4 **Handicap System:** ORR-ez Time on Time will be used.
- 3 **Rules:** This event will be governed by the Mass Bay Sailing Association General Sailing Instructions, except as changed by these Event Sailing Instructions.
- 4 **Notices to Competitors:** Notices will be posted on the official notice board at the MYC clubhouse. Race notification updates may be broadcast over VHF Channel 72 at 1000 and 1100 on the day of the race. The Race Committee will also monitor VHF channel 72 on the day of the race until the last finish. Scratch sheets will be available at [www.regattaman.com](http://www.regattaman.com). Any changes to these Event Sailing Instructions will be announced on VHF channel 72 from the race committee boat TRIDENT on station before the first warning signal of the day.
- 7.1 **Schedule of Races:** Two races are scheduled. The second race will start as soon as possible after the finish of the first race.
- 7.2 **Warning Signal:** The first Warning Signal will be made at 1200. The time interval between the start of one class and the warning signal for the subsequent class will be at least one minute.
- 7.3 **Check-in Before Start:** All boats must check-in by sailing past the race committee boat TRIDENT before the first warning signal of the day. All boats must report sail number, boat name and number of racers onboard.
- 9 **Racing Area:** The starting area will be in the vicinity of Gales Ledge Nun Buoy RN "6" unless the race committee boat TRIDENT displays code flag "L" and proceeds elsewhere. Racers are reminded to observe the RESTRICTED AREAS around Bakers Island as listed in the MBSA GSI.
- 11 **Marks:** Marks will be in accordance with MBSA Standard Rounding Marks Lists A and B (although MBSA Standard Courses may be used). Portable marks will be orange inflatable marks. Any mark changes will be announced by the Race Committee on VHF Channel 72. Green inflatable marks will be used for the start and/or finish marks.
- 14.2 **Recalls:** The Race Committee will use VHF channel 72.
- 17.1 **Time Limit:** The time limit for the race shall be 2 ½ hours after the start of each class. Any yacht that has not finished within 30 minutes after the first yacht in its class to finish will be scored OTL (Over Time Limit) and will be given a finishing position one lower than the last boat to have finished within the time limit.
- 24 **Prizes:** First place trophies will be awarded to each starting class and second and third place trophies will be awarded for each starting class with four or more starters, respectively.

**Social Activities & Awards:** All captains, crews and their guests are invited to the Manchester Yacht Club following the race at approximately 1630. There will be a cash bar along with free chowder and refreshments. Trophies will be presented.



## Notice of Race and Event Sailing Instructions (ESI)

# POT LUCK PURSUIT RACE

EASTERN YACHT CLUB  
Marblehead, Massachusetts

Saturday – September 20, 2025



EYC Clubhouse



Pursuit racing is simple and fun. Boats start in reverse order according to their ratings with the slowest boats starting first. The first boat around the course wins. Come have FUN! First-time and experienced racers are all welcome.

**This race is a QUALIFIER for the MBSA Pursuit Championship.**

### 1. RULES

- 1.1 Racing will be governed by The Racing Rules of Sailing & MBSA GSI except as changed by these ESI.
- 1.2 A boat may take a One-Turn Penalty when she may have broken one or more rules (Changes RRS 44).
- 1.3 Contact between boats is grounds for disqualification of both boats (Changes RRS 14).
- 1.4 All boats shall only use sails per their PHRF or Class Rule.

### 2. REGISTRATION

- 2.1 Open to all PHRF, one design, and cruising boats. If you do not have a 'PHRF rating certificate' the Race Committee (RC) will assign a rating. Register at [www.regattaman.com/calendar.php?reg=MBSA/MBSA-N](http://www.regattaman.com/calendar.php?reg=MBSA/MBSA-N). There is **NO FEE** required to register for this race. The RC may adjust handicaps to facilitate competition.
- 2.2 Online Registration shall be done no later than 2100 hours the day before the race. Late entries may be accepted at the discretion of the Race Committee. The Regattaman website shows an up-to-date scratch sheet and the start time - click on 'View Current Race Entries'.
- 2.3 At registration select the Division, either Cruising (JAM) or Racing (Spinnaker) you want to be scored in.

### 3. SCHEDULE OF RACES

Only one race will be held. The first start will be approximately 1330 hours local time.

### 4. THE COURSES

- 4.1 The course will be provided in an Addendum to the Sailing Instructions. Copies will be available at the EYC Sailing Center and on the Regattaman website at [www.regattaman.com](http://www.regattaman.com).
- 4.2 The starting area shall be between the mouth of Marblehead Harbor and Children's Island.
- 4.3 Shortening of a race shall be between a blue flag on a race committee boat and the nearest mark of the course. The RC boat will also display an 'S' flag.

### 5. MARKS

Marks shall be government navigation buoys or orange tetrahedrons or MarkBot.

### 6. THE START

- 6.1 The starting line shall be between a staff on ETO bearing an orange flag and a green tetrahedron or a MarkBot or government mark. The mark may be replaced by another RC boat bearing an orange flag.
- 6.2 A code flag 'W' will be raised with one sound signal at the beginning of the start time sequence.
- 6.3 Each boat will start according to her rating with slower boats going first. Starting time information will be available at the EYC Sailing Center, or the website [www.regattaman.com](http://www.regattaman.com).
- 6.4 The RC will attempt to do a countdown (at 1 min. and 10 sec.) for each boat's start - broadcast on VHF 72
- 6.5 OSC boats shall restart by rounding either end of the starting line – no dip restarts allowed.

### 7. THE FINISH

The finish line shall be between a staff on an RC boat bearing a blue flag and a green tetrahedron or a MarkBot.  
The mark may be replaced by another RC boat bearing a blue flag.

### 8. TIME LIMITS

The time limit for the race is 4 hours from the first start.

### 9. SCORING

Boats shall be scored based on their finishing position.

### 10. PROTESTS AND REQUESTS FOR REDRESS

Since this is informal racing, competitors are urged to avoid possible protest situations. If this is not possible, you are encouraged to take a One-Turn Penalty as per 1.2.

### 11. SAFETY

A boat retiring from racing or in distress shall notify the RC on VHF channel 72 at the earliest opportunity.

### 12. POST-RACE

All competitors are invited to socialize and celebrate the day's racing at the EYC Sailing Center post-race with **COMPLIMENTARY FOOD** and a chit / credit card bar.



# CHOWDER CUP

SATURDAY / SEPT 20, 2025

JOIN US FOR THE LAST HBR WEEKEND RACE OF THE SEASON!

A MBSA and Hingham Bay Qualifier

## Schedule of Races

- Maximum of 2 races

### Start Time

- Rendezvous at 1200 hours

### Starting Line

- Rendezvous in the vicinity of Mark "32" (Hospital Shoals Can)
- Race Committee will lead the starters to the starting area.

### Time Limit

- Must finish by 1700 hours

### Course

- Will be displayed on RC boat as determined by Race Committee
- Participants are reminded to observe the restricted areas listed in the MBSA General Sailing Instructions.

### Post Race Event

- There will be chowder at the Hingham Yacht Club

### Awards

- Trophies will be awarded at a future date

## REGISTRATION

- **\$50.00** – MBSA Discount \$5. \$10 Late Fee after 9/13 @1200 hrs.
- Registration Fee is included in Hingham Bay Racing Season and Weekend Passes which are open to all boats with a **valid EZ handicap certificate**
- **Online Registration and payment:** [Regattaman.com](http://Regattaman.com)
- **By mail:** Hingham Bay Racing, PO Box 540 Hingham, MA, 02043

## Additional Sailing Instructions

### Rules

- Races will be governed by the MBSA General Sailing Instructions except as modified herein or by the Race Committee

### Classes

- This race will be scored using valid EZ ratings, wind ranges and course types to set the handicap at race time.
- Class assignments will be posted on Regattaman no later than 3 hours prior to the scheduled race start.
- Be mindful that multiple classes may share the same start sequence dependent on the number of entrants.

### Flags

- Yachts shall fly their class flag from the backstay.

### Race Committee

- The RC will monitor channel 68.
- Yachts must notify the RC if withdrawing.

### Race Information

- There will be NO Skippers' Meeting.
- Any changes to the sailing instructions or notices to competitors will be posted at [www.regattaman.com](http://www.regattaman.com) 3 hours prior to the scheduled race start.

### Protests [Must be filed by 1600 hrs. on Sept 21st]

- All boats intending to file a protest shall notify the Race Committee upon finishing the race and shall file a completed US Sailing Protest Form, via email to: [RC@hinghambayracing.org](mailto:RC@hinghambayracing.org)

### For more information

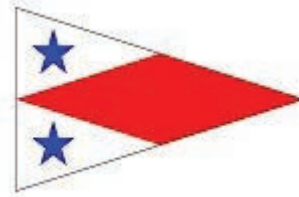
- Visit us on Facebook or at [www.hinghambayracing.org](http://www.hinghambayracing.org)

For registration and race results, visit...  
**REGATTAMAN.COM**

Hingham Bay Racing / 2025



# Savin Hill Yacht Club and Constitution Yacht Club



Present the

## Boston Light Race



**Saturday, Sept. 27, 2025**

For Notice of Race & Sailing Instructions

Visit [www.regattaman.com](http://www.regattaman.com)

**Post-Regatta party at SHYC**

Free entry - free moorings

Congrats to 2024 winners

*RockIt 2.0, Lance Ryley, SPIN*

*Harrier, Brian Pitt, JAM*



CORINTHIAN  
YACHT CLUB

# Marblehead Chowder Cup

PHRF ♦ SUNDAY, SEPT 28 2025

[regattaman.com/calendar](http://regattaman.com/calendar)

REGISTER TODAY!



## VITAL INFO

### Mass Bay Qualifier

PHRF classes Spin and JaM

### Start time

First gun at 1:00 PM

### Starting Line

In the vicinity of Tinker's Rock  
Gong, MBSA List A Mark D

### Registration

\$75 Entry Fee

\$5 off for MBSA and/or US Sailing members

\$10 more off before September 24

### Moorings for two nights included!

Enjoy the full hospitality of the Club!

For moorings (while they last) contact  
dockmaster Jack Carney

[jcarney@corinthianyc.org](mailto:jcarney@corinthianyc.org)

781-631-4745

VHF 9

© BRUCE DURKEE 2023

## JOIN US AND SOCIALIZE AFTER THE RACE!

Come up Saturday and stay the night! Enjoy the hospitality of the club and the best view on the North Shore.

- Marblehead Chowder Cup Trophy for best overall performance of all classes.
- Boats traveling to Marblehead contact Dockmaster Jack Carney for moorings (contact information in VITAL INFO block).





CORINTHIAN  
YACHT CLUB

# Bandit Race

ORR-EZ SHORTHANDED ♦ SAT, OCT 04 2025

[regattaman.com/calendar](http://regattaman.com/calendar)

REGISTER TODAY!



## VITAL INFO

### ORR-EZ (ToT) SH

Spinnaker, Jib and Main

### Start time

First gun at 1:00PM

### Starting Line

In the vicinity of Tinker's Rock  
Gong, MBSA List A Mark D

### Registration

\$65 Entry Fee

\$5 off for MBSA and/or US Sailing  
Members

\$10 more off before September 26

**Moorings and full hospitality of the  
club for two nights included!**

For moorings (while they last) contact  
dockmaster Jack Carney

[jcarney@corinthianyc.org](mailto:jcarney@corinthianyc.org)

781-631-4745

VHF 9



Image by Cottonbro Studios

## COME FOR THE RACE AND STAY FOR THE PARTY!

Your entry fee includes two nights on a mooring (first come-first serve) and use of the Corinthian Yacht Club. Come for the race and stay for the party!

- Prizes will be awarded in division
- Second place trophies will be awarded in each class with at least 3 competitors.
- Additional trophies for each 6 additional competitors in a class
- Boats traveling to Marblehead contact Dockmaster Jack Carney for moorings (contact information in VITAL INFO block).



# General Sailing Instructions

## 1 Introduction

- 1.1 The yacht clubs and sailing organizations of Mass Bay Sailing Association (“MBSA”) plan to sponsor races and regattas, and they invite you to participate.
- 1.2 The yacht clubs and sailing organizations are the *Organizing Authority* (“OA”) of their respective events (races, regattas and/or series). The OA will have the authority to modify these *General Sailing Instructions* (“GSI”) by publishing *Event Sailing Instructions*.

## 2 Eligibility and Entry

- 2.1 Eligible boats, as stated in the *Event Sailing Instructions* (“ESI”), may be entered for each event by completing registration with the OA.
- 2.2 The entry method and any deadlines will be specified in the ESI.
- 2.3 The entry fee(s) and deadlines will be specified in the ESI. No refunds will be made if an entry is withdrawn after the entry deadline specified in the ESI. The entry fee is payable to the OA and shall be paid in order to be scored.
- 2.4 The handicap system(s) and either Time-on-Time (TOT) or Time-on-Distance (TOD) to be used will be specified in the ESI.
- 2.5 Each boat entered in an event shall be prepared to provide the OA with a copy of their valid handicap certificate(s) if requested. This valid copy may be online on a website that houses official copies (e.g. phrfne.org or regattaman.com).

## 3 Rules

- 3.1 The event(s) will be governed by the rules as defined in *The Racing Rules of Sailing* (“RRS”).
- 3.2 US Sailing prescription to the RRS 63.1(b) is deleted.
- 3.3 Additionally, the event(s) will be governed by the following:
  - (a) The US Safety Equipment Requirements (USSER).
    - i. All yachts shall minimally comply with the US Nearshore section of the US SER and shall comply with their class rules, where applicable.
    - ii. In the event of a conflict between these Requirements and applicable class rules, the class rules shall apply.
  - (b) The current published documents from the controlling organizations governing the chosen handicap system(s).
- 3.4 The *International Regulations for Preventing Collisions at Sea* (“IRPCAS”) will replace the Rules of Part 2 of the RRS from sunset until sunrise.
- 3.5 For the purposes of MBSA, **Shorthanded** means one or two persons on the boat. When racing in an SH event, the use of an autopilot or other steering device is allowed. This changes RRS 52.

## 4 Notices to Competitors

The procedure for Notices to Competitors will be specified in the ESI.

## 5 Changes to Sailing Instructions

- 5.1 Any change to the sailing instructions will be posted before 0800 on the day it will take effect, except that any change to the schedule of races will be posted by 1800 on the day before it takes effect.
- 5.2 Changes to these GSI will be posted on the MBSA web site [www.massbaysailing.org](http://www.massbaysailing.org).

## 6 Signals Made Ashore

- 6.1 The location for signals made ashore, if any, will be specified in the ESI.
- 6.2 When flag AP is displayed ashore, '1 minute' is replaced with 'not less than 60 minutes' in the race signal AP. This changes "Race Signals".
- 6.3 The meaning for any additional signals made ashore will be specified in the ESI.

## 7 Schedule of Races

- 7.1 The schedule and number of races will be specified in the ESI.
- 7.2 The time for the first warning signal will be specified in the ESI.
- 7.3 The time for the last warning signal, if any, will be specified in the ESI.

## 8 Class Flags

Each boat racing in a handicap fleet shall display, from her backstay or a stern staff, the class flag for the class in which she is competing, as specified in 2.1, commencing with her warning signal until she finishes. Boats without a backstay or staff shall fly the class flag from their starboard standing rigging.

Each boat racing in a One Design fleet shall comply with her class rules.

## 9 Racing Area

The racing area will be specified in the ESI.

## 10 The Course(s)

- 10.1 The course(s) will be specified in the ESI and will be taken from **ONE** of the following:
  - (a) MSBA Standard Courses;
  - (b) MSBA Standard Rounding Marks List A, B, C;
  - (c) A list of marks issued by the OA and included in the ESI.
- 10.2 The **MSBA Standard Courses** show the courses, their letter designation, the approximate angles between legs, the order in which marks are to be passed, and the side on which each mark is to be left.  
When these courses are used:
  - (a) The course letter designation, approximate compass bearing and approximate distance to Mark 1 will be displayed by the race committee signal boat.
  - (b) To provide for simultaneous rounding of a nearby mark and starting by separate classes, the **starting** and/or **finishing** mark(s) may be set slightly (approximately 100 yards) beyond the windward or leeward mark as applicable. If such a separate starting and/or finishing mark is set, the nearby windward or leeward mark is not a mark of the course for that leg.
  - (c) *Offset Mark*: An offset mark may be in place for the rounding of a windward mark.
  - (d) *Leeward Gates*: Gates may be in place for the rounding of a leeward mark. If a gate mark is missing the remaining mark shall be passed to port.
- 10.3 Courses using marks from the **MSBA Standard Rounding Marks List A, B, C** and the side on which each mark is to be left, will be designated by letters or numbers displayed by the race committee signal boat, along with a colored or lettered rounding side indication. Marks shall be rounded, and the finishing mark passed, in the order displayed.
  - (a) When code flags are used, 1<sup>st</sup> Substitute substitutes for the first flag in the hoist, 2<sup>nd</sup> Substitute substitutes for the second flag and 3<sup>rd</sup> Substitute substitutes for the third flag in the hoist.
  - (b) Code flag T indicates that the posted course is to be sailed twice around. The starting mark is not included unless it is also a designated mark.
  - (c) When an inflatable windward mark is used (List A Mark W) the approximate compass bearing and approximate distance to that mark will be displayed by the race committee signal boat.
  - (d) If a green flag or placard is displayed, all turning marks shall be rounded to starboard; otherwise, a green color or the letter S associated with a turning mark letter or number shall indicate starboard rounding for that mark, and a red color, letter P, or no color will indicate port rounding. In the absence of any indication all marks shall be left to port.
  - (e) The finish line will be at the last designated mark.

- 11 **Marks**  
Marks will be either:
- (a) As described in the ESI (e.g. when inflatable marks are used with MSBA Standard Courses).
  - (b) As identified in MBSA Standard Rounding Marks List A, B, C.
- 12 **Areas that are Obstructions**  
Passing or Boundary Marks (Restricted Areas) along with the Additional Restrictions contained in MBSA Standard Rounding Mark Lists A, B, C are obstructions.
- 13 **The Start**
- 13.1 The starting line will be between a staff displaying an orange or yellow flag or shape on a race committee boat and the course side of a nearby mark.
  - 13.2 Boats whose warning signal has not been made shall avoid the *starting area* during the starting sequence of other boats.
  - 13.3 The starting area is defined as a box whose top extends one-half the length of the starting line past either end of the starting line and whose sides are one half of the length of the starting line behind the starting line.
- 14 **Recalls**
- 14.1 The race committee will attempt to hail each boat that is determined to be on course side (“OCS”) using VHF radio. The failure to hail, the order of hail, the hail of some but not all, or the untimely hail of OCS boats, all will not be grounds for redress. This changes RRS 61.4(b)
  - 14.2 The VHF channel used for recalling boats will be specified in the ESI.
- 15 **Change of the Next Leg of the Course**  
For races using MBSA Standard Rounding Marks List A, B, C, the race committee will display the letter or number, identifying the new mark, along with the side on which it is to be left. This changes RRS 33.
- 16 **The Finish**
- 16.1 The finishing line will be between a staff displaying a blue flag or shape on a race committee boat and the course side of a nearby mark.
  - 16.2 Each boat is responsible for taking her own time and, if possible, the names or sail numbers of the boats immediately ahead and astern. This information shall be provided to the race committee upon request.
  - 16.3 For events that include more than one race, flag A displayed, with no sound, while boats are finishing means “No more racing today”.
- 17 **Time Limits**
- 17.1 Time limit(s), if any, will be specified in the ESI, stated as the number of hours and/or minutes after the actual starting time of each class.
  - 17.2 If a finishing window applies, boats failing to finish within the finishing window will be scored DNF. This changes rules 35, A4 and A5.
- 18 **Penalty System**
- 18.1 U.S. Sailing Prescription Appendix V V1 shall apply.
  - 18.2 U.S. Sailing Prescription Appendix V V2 shall apply.
  - 18.3 In accordance with RRS 44.1 an alternative penalty shall be used as one of:
    - (a) taking a penalty in compliance with the penalty terms of U.S. Sailing Prescription Appendix V V1
    - (b) taking a Scoring Penalty as the penalty in accordance with RRS 44.3.
- 19 **Protests and Requests for Redress**  
Protest forms shall be delivered in person to the protest desk within one hour after the race committee signal boat, for the race in which the protesting boat competed, docks. If allowed by the ESI, protest forms may be submitted by email. Protest hearings may be conducted virtually in lieu of in-person when considered practicable by the Organizing Authority. See the ESI for details.
- 20 **Scoring**
- 20.1 The RRS Low Point System will be used for all individual events.
  - 20.2 The MBSA Offshore Season Scoring System will be used for all season-long series.



- 20.3 One race is required to be completed to constitute a series.
- 20.4 No race scores will be excluded for individual events.
- 20.5 Event score ties are broken in accordance with RRS A8.1. If a tie remains among handicapped boats, it will be broken in favor of the boat with the lowest **total corrected time for all races** in that event. For a boat scored DNS, OCS, ZFP, UFD, BFD, SCP, RET, DNF, TLE (Time Limit Expired), DSQ, or DNE, her corrected time in that race will be the corrected time of the boat finishing last in that class plus 10%.
- 20.6 For Season Qualifying Events, MBSA Class Splits will be used.
- 20.7 For TOD scoring when MBSA Standard Courses are used, the posted distance, adjusted for starting marks beyond the windward or leeward mark, offset marks and finish lines beyond the windward or leeward mark, if any, will be official for scoring purposes.
- 20.8 For TOD scoring when MBSA Standard Rounding Marks, List A, B, C are used, the distance as measured from the mark positions as published in the current edition of the US Coast Guard Light List, adjusted for fixed obstructions such as islands and passing and boundary marks, if any, will be official for scoring purposes. If an obstruction may be passed on more than one side the shorter distance will be used.
- 20.9 When the EZ handicap rating system is used, the following matrix may be used for rating selection:  
Standard Courses A, C, H, K, L: W/L 50/50 - B, D: W/L 60/40 - E, F, G, M, O: Random Leg. Ocean, Navigator & Point to Point races: Random Leg, Mostly WW, Mostly LW, Mostly Reaching.
- 20.10 When the EZ handicap rating system is used, if no wind range has been posted (or hailed) by the warning signal the medium range is intended to be used for scoring. The final wind range to be used for scoring may be posted (or hailed) prior to the first boat finishing the race. If no choice is indicated, the medium range is intended to be used for scoring. However, the use of an inappropriate selection of wind range:
- (a) shall not be cause for Redress. This changes RRS 61.4(b).
  - (b) may be corrected by the Race Committee within 24 hours of the end of the race. See RRS 90.3(c).
- Wind Ranges can be found in the Glossary on the Regattaman Certificates Page.
- 20.11 Pursuit races will use Modified High Point Scoring System as follows:
- (a) Each boat receives 10 points for starting the race
  - (b) Each boat receives 1 additional point for each boat it beats in its **Division**, either **Spin** or **JAM**, provided all boats in the division sail the same course.
  - (c) Organizing Authorities may create smaller classes for the purposes of their event; however, MBSA Pursuit Championship points will be based on the overall scoring of all boats in the MBSA division.
  - (d) Boats scored DNF or OCS receive 10 points. Boats scored DNC, DNS, or DSQ receive 0 points.

## 21 **Safety Regulations**

- 21.1 All boats shall have a working VHF radio.
- 21.2 Boats shall check in with the race committee signal boat before her first warning signal each day by sailing past the signal boat or by VHF (if allowed in the ESI) when within 100 yards of the signal boat and stating her sail number and the number of souls on board. Boats that fail to check in may receive a 20% scoring penalty for the first race. This changes RRS 63.1 and A5.
- 21.3 In the event of an emergency, or if a boat withdraws, either the boat or an associated support boat shall notify the race committee at the first reasonable opportunity.

## 22 **Support Boats**

Team leaders, coaches and other support personnel shall stay outside areas where boats are racing from the time of the preparatory signal for the first class to start until all boats have finished or retired, or the race committee signals postponement or abandonment.

## 23 **Radio Communication**

Except in an emergency, a boat that is racing shall not make or receive voice or data communications that are not available to all boats. This restriction applies to all electronic devices. Note as per RRS **Part 3; Rule 37**: "When the race committee displays flag V with one sound, all boats and official and support vessels shall, if possible, monitor the race committee communication channel for search and rescue instructions"

## 24 **Prizes**

Prizes will be specified in the ESI.

**Disclaimer of Liability**

Competitors participate in the event(s) entirely at their own risk. See rule 3, Decision to Race. The organizing authority will not accept any liability for material damage or personal injury or death sustained in conjunction with or prior to, during, or after the event(s).

# Class Splits

For EZ Races, the class splits will be based on the EZ Certificate PHRF Benchmark (BM) rating. For PHRF races, class splits will be based on the PHRF New England rating for each boat. However, final class assignment will be at the discretion of the MBSA Scorer, and the intent is to keep boats in the same classes across all scoring systems. Once a boat is placed in a class, it will be in that class for the entire season no matter what other rating or scoring is used for an individual event or race, unless a configuration change leads to a rating change.

Shorthanded boats race as a single class under the Spinnaker rating for the boat.

**Reference EZ Class Splits (BM PHRF)**

**Spinnaker**

- Class A = up to 55
- Class B = 56 to 100
- Class C = 101 to 155
- Class D = 156 and higher

**Jib and Main**

- Class F = up to 155
- Class G = 156 and higher

**Reference PHRF-NE Splits**

**Spinnaker**

- Class A = up to 55
- Class B = 56 to 100
- Class C = 101 to 155
- Class D = 156 and higher

**Jib and Main**

- Class F = up to 155
- Class G = 156 and higher

## Scoring System

**HANDICAP RACE SCORING:** Points are awarded to each boat using the Mass Bay Offshore Scoring System (CHIPS table below).

All events will be scored based on the boat's finishing place in the event as reported by the Organizing Authority.

Note: For regattas that are abandoned, all boats checking in with the RC on the water will receive 50 points. These points apply only to the MBSA Season Championship and fulfill the travel requirement, if applicable.

## MBSA Offshore Season Scoring System

POSITION

NUMBER OF RACERS*																						
P \ N	1	2	3	4	5	6	7	8	9	10	11	12	13	14	15	16	17	18	19	20	N \ P	
1	86.1	88.2	90	91.5	92.7	93.8	94.8	95.5	96.2	96.8	97.3	97.7	98	98.3	98.6	98.8	99	99.1	99.3	99.4	1	
2		74.6	77.5	80	82.1	83.9	85.5	86.9	88.1	89.1	90.1	90.9	91.6	92.2	92.8	93.3	93.7	94.1	94.5	94.8	2	
3			65	68.5	71.4	74	76.2	78.2	79.9	81.5	82.8	84.1	85.2	86.1	87	87.8	88.5	89.1	89.7	90.2	3	
4				57	60.7	64	66.9	69.5	71.8	73.8	75.6	77.3	78.7	80	81.2	82.3	83.2	84.1	84.9	85.7	4	
5					50.1	54.1	57.7	60.8	63.7	66.2	68.4	70.5	72.3	73.9	75.4	76.8	78	79.1	80.2	81.1	5	
6						44.2	48.4	52.2	55.5	58.5	61.2	63.7	65.9	67.8	69.6	71.3	72.8	74.1	75.4	76.5	6	
7							39.1	43.5	47.4	50.9	54	56.9	59.4	61.7	63.9	65.8	67.5	69.1	70.6	72	7	
8								34.8	39.3	43.2	46.8	50.1	53	55.7	58.1	60.3	62.3	64.1	65.8	67.4	8	
9	OCS = N+1 points								31.1	35.6	39.6	43.3	46.6	49.6	52.3	54.8	57.1	59.1	61.1	62.8	9	
10	UFD = N+1 points									27.9	32.4	36.5	40.1	43.5	46.5	49.3	51.8	54.1	56.3	58.3	10	
11	BFD = N+1 points											25.2	29.7	33.7	37.4	40.7	43.8	46.6	49.2	51.5	53.7	11
12	DNF = N+1 points												22.9	27.3	31.3	34.9	38.3	41.3	44.2	46.7	49.1	12
13	RET = N+1 points													20.8	25.2	29.1	32.8	36.1	39.2	42	44.6	13
14	DNS = N+2 points														19.1	23.4	27.3	30.9	34.2	37.2	40	14
15	DSQ = 0 points															17.6	21.8	25.6	29.2	32.4	35.4	15
16	DNE = 0 points																16.3	20.4	24.2	27.6	30.9	16
17	DNC = 0 points - not included in N (number of racers*)																	15.1	19.2	22.9	26.3	17
18	ABD = 50 points (only for boats checked in on site)																		14.2	18.1	21.7	18
19	*The NUMBER OF RACERS is based on the number of boats that check in with the RC on station NOT registrants																			13.3	17.2	19
20																					12.6	20
N+1	70.8	61	52.6	45.5	39.4	34.2	29.9	26.1	23	20.3	18	16.1	14.4	13	11.8	10.8	9.9	9.2	8.6	8	N+1	
N+2	55.5	47.3	40.1	34	28.7	24.3	20.6	17.5	14.8	12.6	10.8	9.3	8	6.9	6	5.3	4.7	4.2	3.8	3.5	N+2	

**PURSUIT RACE SCORING:** Boats are scored 10 points + an additional point for each boat that they beat in their division. For example, the 1st place boat in a 20 boat class receives 29 points, 5th receives 25 points. While individual events may have multiple divisions, the MBSA Pursuit Championship is based on the overall scores consolidated into the **Spinnaker** and **Jib and Main** divisions, provided all boats in a division sail the same course.



# Standard Courses

